

creative liaisons

A SHOWCASE
UNITING
LEBANESE
DESIGNERS
& ARTISANS



**creative
liaisons**

Curator:
Almaz Collectible Design

Consultant:
The Ready Hand

Coordination:
Jihane Korban Schmitt

Copywriting:
Betty Francis

Photography:
Tarek Moukaddem all photos except
pp. 66-67 © Carl Gerges Architects
pp. 126-127 © Walid Rashid

Design and artwork:
-scope Ateliers

All rights reserved. The reproduction of this publication in whole or in part, in any form by any electronic, mechanical or other means, including photocopying or recording or in any information storage or retrieval system, is prohibited without the prior consent of LIFE.

First published August 2023
© LIFE, 2023
© The designers for their work

creative liaisons

**A SHOWCASE UNITING
LEBANESE DESIGNERS & ARTISANS**



“Stronger Together” is the guiding principle by which we at **LIFE** work diligently to empower the Lebanese community. Our network boasts over 1,200 members from across the globe, all united by a common goal: working together to ensure a brighter future for the Lebanese people and Lebanon.

Central to our efforts at LIFE is our Education programme, which invests in our youth’s education and employability. We firmly believe in the intrinsic role of higher education in Lebanon as a transformative power capable of shaping individuals, reinvigorating communities, and cementing the nation’s success as a whole.

We are thrilled to announce that our LIFE Global Gala dinner will be held in person in London on November 10th 2023. After a four-year hiatus, this gathering aims to fundraise for our charity, LIFE Generation, which runs the Education programme.

To further support our cause, we are delighted and privileged to be presenting “Creative Liaisons” at this year’s fundraising gala. This special showcase brings together Lebanese designers and artisans, and their creations will be sold at auction to benefit the Education programme.

This collection of 62 pieces commissioned specially for LIFE, curated by Almaz Collectible Design and in partnership with The Ready Hand, represents the epitome of design, artistry, craftsmanship, and timeless elegance that are prevalent in Lebanon. Each item has been meticulously curated to showcase the creativity of the designer and their collaboration with local artisans to produce items of exceptional quality and undeniable beauty. In appreciation of this unique collection, LIFE is contributing towards each piece’s production costs to fairly compensate the skilled artisans for their hard work.

Our heartfelt appreciation goes out to Zeina Raphael and Pascale Habis for their unwavering commitment, expertise, and enthusiasm in turning this project into reality.

We would also like to extend our gratitude to Gregory Gatseralia, who generously provided the venue for the “Creative Liaisons” exhibition at Smo Gallery, “the iconic venue for Design in Lebanon, in October 2023”.

Our profound thanks to the gifted artisans and designers, generous contributors, dedicated collectors, and passionate bidders who have made this endeavour possible.

As you proceed to immerse yourself in this collection, please remember that your contributions can ignite the aspirations and dreams of Lebanon’s future generations.

FREDERIQUE AKATCHERIAN CHEMALI & ZEINA FARHAT

Managing Directors – LIFE & LIFE GENERATION

FOREWORD

ALMAZ COLLECTIBLE DESIGN

Over the past 20 years, Lebanon has witnessed the rise of a vibrant design scene. These designers have paved the way for a whole new generation of young designers eager to follow in their footsteps. Design fairs alongside initiatives supporting, promoting, and democratizing design, have flourished to showcase this thriving sector.

The momentum rapidly extended beyond the borders of Lebanon, with participation in international and acclaimed fairs. And major international galleries as well as the specialised press have noticed Lebanese designers who have enjoyed praise from critics. However, due to the lack of an adequate industrial production system, electricity shortages, absence of State subsidies, limited raw material, as rising import prices, Lebanese designers are constrained to creating limited-edition design pieces and are unable to produce on a large scale locally.

On the other hand, it is important to note that the production of collectible pieces is possible due to the close collaboration of designers with local artisans, and Lebanon boasts a vast array of craft skills particularly in materials such as metal (particularly brass), marble, wood, glass. These reflect the country's rich culture heritage and know-how, which is at par with those found in the rest of the world.

The multiple trials faced in Lebanon since 2019 have dramatically impacted the livelihood of the artisans and transformed the social fabric of many hubs where they were based.

For the 2023 LIFE Global Gala dinner, we have called upon the talent and generosity of Lebanese designers, similarly to the 2019 edition, challenging them to create an exclusive limited-edition piece for LIFE in collaboration with the exceptional craftsmanship of Lebanese artisans. The aim was to create pieces that combine the talents of the mind and hand, representing the legacy of generations of traditional craftsmanship, while also promoting and regenerating the design scene in Lebanon.

This resulted in the "Creative Liaisons" collection, comprising 62 works of furniture, ceramics, tapestries, lighting, and decorative objects, of which 40 single edition pieces. "Creative Liaisons" represents the dialogue between these two intrinsically linked worlds, contributing to Lebanon's cultural influence beyond its borders.

I would like to express my gratitude to all the studios and designers who participated in this project, worked tirelessly, and devoted their time, energy, and resources to create an exceptional piece for the benefit of LIFE Education programme. Many chose to embrace the challenge of collaborating with new artisans recommended by The Ready Hand, paying tribute to all craftsmen who persistently strive to keep their businesses afloat despite the daily hurdles in a country where the entire system is faltering. Supporting local production means preserving the soul of our neighborhoods, safeguarding our collective consciousness, and perpetuating generations of traditional craftsmanship for the generations to come.

ZEINA RAPHAEL

Curator – Creative Liaisons | Founder - Almaz Collectible Design

FOREWORD
THE READY HAND

Lebanese craftsmanship, deeply rooted in the rich tapestry of our culture and standing as a testament to the country's history, identity and intangible cultural heritage, is enduring significant challenges and neglect, leading to its unfortunate abandonment and lack of preservation.

The Ready Hand's platform is committed to revitalizing and rejuvenating our country's rich craftsmanship traditions. Through meticulous documentation, extensive research and the cultivation of conditions for these crafts to thrive, we empower artisans and promote their work. The Ready Hand endeavors to restore Lebanon's once-flourishing craftsmanship heritage to its rightful place as a source of pride and inspiration for future generations.

The gracious invitation from LIFE and Almaz Collectible Design to collaborate on a collection entirely crafted by artisans in Lebanon presented an invaluable opportunity for The Ready Hand to showcase the remarkable skills of our artisans, to support the collaboration with the designers to create exceptional pieces, while supporting the hopes and dreams of future generations through LIFE's Education programme.

Throughout the months leading up to the final collection, we had the privilege of witnessing not only the artisans' skills and expertise but also their responsiveness, generosity, and efficiency. From the initial ideas and sketches to the tangible realization of objects, there was a mutual respect and constructive dialogue between designers and craftsmen. The artisans' quiet sense of pride in their work was evident, as was the designers' deep respect and dedication to the craft.

The outcome, Creative Liaisons, is a remarkable collection of Collectible Design pieces, crafted through the collaborative efforts of Lebanese designers and artisans across Lebanon. The techniques, materials, and skills employed in this collection represent the culmination of centuries' worth of knowledge, expertise, and traditions that have been passed down from generation to generation.

We hope you will appreciate the artistry and creativity that breathe life into each of these pieces.


PASCALE HABIS & ZEINA RAPHAEL
Co-founders - The Ready Hand

DOCUMENT NAVIGATION

TO ACCESS ANY OF THE SHOWCASED PIECES, click on the designer's name to open their dedicated page.

To return to this table of contents, click on the "Creative Liaisons" running title located at the bottom left corner of the page.

To browse items by category or value, click on the "category" or "estimated value" mentions located at the bottom right corner of the page.

TO BID ON ANY ITEM, click on  at the bottom right corner of the page.

Works are classified alphabetically by the name of the main designers but importantly include on the main page below the "X" symbol, those artisans they have collaborated with for the making of the piece.

All measurements are shown as width × length × height, unless specified.

Please note that all the pieces are in Lebanon and will have to be collected from there by the successful bidders.

200GRS.	14
RAED ABILLAMA ARCHITECTS	16
TATIANA AKL & MAYA SAFI	18
SAMER ALAMEEN	20
ATELIER ASSAF	22
ATELIER L'INCONNU	24
MAHMOUD BARBOUR	26
MARC BAROUD	28
ALEXANDRA BASSIL & CHARLES NAKHLE	30
OMAR BASSIL	32
YOUSSEF BASSIL	34
ETIENNE BASTORMAGI	36

CARLA BAZ	38
AHMAD BAZAZO	40
BITS TO ATOMS	42
BOISSELIERS DU RIF	44
BOKJA	46
STEPHANIE BOUERI	48
NEVINE BOUEZ	50
OMAR CHAKIL	52
GEORGES CHEIKH	54
KAREN CHEKERDJIAN	56
ZEIN DAOUK	58
NADA DEBS	60

FABRACA STUDIOS	62
RABIH GEHA	64
CARL GERGES ARCHITECTS	66
GHAITH & JAD	68
HICHAM GHANDOUR	70
ANTOINE GUEKJIAN	72
SOURAYA HADDAD	74
INAASH ASSOCIATION	76
KAREL KARGODORIAN	78
PETER KHATCHERIAN	80
LES ATELIERS DE TYR	82
KARINE LETAYF	84
GALAL MAHMOUD	86

MAISON TARAZI	88
MARIAGROUP	90
ELIE METNI	92
CYBELLE MOUTRAN	94
ANASTASIA NYSTEN	96
ADRIAN PEPE	98
SHAHA RAPHAEL	100
NADA RIZK	102
T SAKHI	104
PAOLA SAKR	106
ZEINA BACARDI SAKR	108
JOYCE SAMAHA	110
LEILA SBAITI	112

LINA SHAMMA	114
SPOCKDESIGN	116
TATIANA STEPHAN	118
STRO DESIGNS	120
STUDIO CAMEL	122
STUDIO MANDA	124
KARINA SUKAR	126
THOMAS TRAD	128
RICHARD YASMINE	130
RANA YAZIGI	132
CHRISTIAN ZAHR	134
NADA ZEINEH	136

EXHIBITED WORKS

EXHIBITED WORKS BY CATEGORY

FURNITURE

CABINETS

200GRS. LIVE

ATELIER L'INCONNU LIVE

ETIENNE BASTORMAGI

NADA DEBS LIVE

TABLES

RAED ABILLAMA ARCHITECTS LIVE

TATIANA AKL & MAYA SAFI

MAHMOUD BARBOUR

KAREN CHEKERDJIAN LIVE

RABIH GEHA

STUDIO CAMEL

STUDIO MANDA LIVE

SHELVING

MARC BAROUD

CHRISTIAN ZAHR

SEATING

YOUSSEF BASSIL

AHMAD BAZAZO

BITS TO ATOMS

BOKJA

OMAR CHAKIL

CARL GERGES ARCHITECTS LIVE

KAREL KARGODORIAN

SHAHA RAPHAEL

T SAKHI

CONSOLES

HICHAM GHANDOUR

GALAL MAHMOUD

ELIE METNI

LIGHTING

SAMER ALAMEEN

FABRACA STUDIOS

ANASTASIA NYSTEN

PAOLA SAKR

THOMAS TRAD

DECORATIVE OBJECTS

ATELIER ASSAF

ALEXANDRA BASSIL
& CHARLES NAKHLE

CARLA BAZ

BOISSELIERS DU RIF

GHAITH & JAD

LES ATELIERS DE TYR

MAISON TARAZI

MARIAGROUP LIVE

KARINA SUKAR

RICHARD YASMINE LIVE

NADA ZEINEH

LIFESTYLE

OMAR BASSIL

GEORGES CHEIKH

ANTOINE GUEKJIAN

PETER KHATCHERIAN

SPOCKDESIGN

STRO DESIGNS

CERAMICS

STEPHANIE BOUERI

NEVINE BOUEZ

ZEIN DAOUK

SOURAYA HADDAD LIVE

KARINE LETAYF

CYBELLE MOUTRAN

NADA RIZK

ZEINA BACARDI SAKR

JOYCE SAMAHA

LEILA SBAITI

LINA SHAMMA

RANA YAZIGI

TEXTILE

INAASH ASSOCIATION

ADRIAN PEPE

TATIANA STEPHAN

EXHIBITED WORKS BY ESTIMATED VALUE

BELOW £ 2,500

ALEXANDRA BASSIL
& CHARLES NAKHLE

OMAR BASSIL

YOUSSEF BASSIL

BOISSELIERS DU RIF

GEORGES CHEIKH

ANTOINE GUEKJIAN

INAASH ASSOCIATION

KAREL KARGODORIAN

PETER KHATCHERIAN

LES ATELIERS DE TYR

CYBELLE MOUTRAN

SHAHA RAPHAEL

PAOLA SAKR

ZEINA BACARDI SAKR

LINA SHAMMA

STRO DESIGNS

KARINA SUKAR

RANA YAZIGI

£ 2,500 - £ 8,000

TATIANA AKL & MAYA SAFI

SAMER ALAMEEN

ATELIER ASSAF

MAHMOUD BARBOUR

ETIENNE BASTORMAGI

BOKJA

STEPHANIE BOUERI

NEVINE BOUEZ

ZEIN DAOUK

FABRACA STUDIOS

GHAITH & JAD

KARINE LETAYF

MAISON TARAZI

ADRIAN PEPE

NADA RIZK

JOYCE SAMAHA

LEILA SBAITI

TATIANA STEPHAN

STUDIO CAMEL

THOMAS TRAD

£ 8,000 - £ 15,000

MARC BAROUD

CARLA BAZ

AHMAD BAZAZO

BITS TO ATOMS

OMAR CHAKIL

RABIH GEHA

HICHAM GHANDOUR

SOURAYA HADDAD LIVE

GALAL MAHMOUD

ELIE METNI

ANASTASIA NYSTEN

T SAKHI

RICHARD YASMINE LIVE

CHRISTIAN ZAHR

NADA ZEINEH

ABOVE £ 15,000

200GRS. LIVE

RAED ABILLAMA ARCHITECTS LIVE

ATELIER L'INCONNU LIVE

KAREN CHEKERDJIAN LIVE

NADA DEBS LIVE

CARL GERGES ARCHITECTS LIVE

MARIAGROUP LIVE

SPOCKDESIGN

STUDIO MANDA LIVE

200Grs. BY PASCAL HACHEM & RANA HADDAD

× MOHANAD TOHMÉ AND MICHEL MAKHLOUF |
WOOD WORK, RATTAN AND PAINTING
SORAYA HAMOUD | CLAY MODELLING, STYROFOAM
ADJUSTMENTS AND PRODUCTION FOLLOW-UP
STYRODESIGN | 3D SCANNING AND STYROFOAM MAKING
AKIL CHAYKHO | SAND CASTING

Humpty Dumpty is the perfect example of what results when we push the boundaries of creativity in both design and craftsmanship. It features sturdy wood and rattan structures in curvaceous and organic shapes, covered with handcrafted wool pebbles.

To realize their idea, Pascal Hachem and Rana Haddad merged the expertise of their artisans with CNC machinery and 3D scanning devices to achieve intricate pieces that would have taken significantly longer to produce by hand. This harmonious blend of traditional craftsmanship and modern technology enhanced the production process, celebrating the fusion of new skills with age-old expertise.

Pascal Hachem and Rana Haddad are the co-founders of 200Grs., born out of a fascination with the city as an object, as an urban-scale installation, and as an industrial design space. They simply wanted to make pieces that brought into play local craftsmanship and artisanal skills at risk of disappearing, with the aim of challenging constraints and adapting existing know-how to positively fuel, propel, and keep their city alive.

EXHIBITIONS AND ACQUISITIONS

- 2023 "Beirut, The Eras of Design" collective exhibition at mudac – Lausanne, Switzerland

- 2022 "Beirut, The Eras of Design" collective exhibition at Centre for Innovation and Design (CID) in Grand-Hornu – Brussels, Belgium
- 2022 and 2019 *Debris of text and eyeglasses* and *Stuck Stick Series* acquired by the Victoria and Albert Museum – London, UK
- 2017 "Taxonomy of Simple" solo show during London Design Festival at the invitation of Brompton Design District – London, UK
- 2016 and 2015 "Artifacts" and "0.91 cubic meter" solo shows at Carwan Gallery – Beirut, Lebanon



Humpty Dumpty

LIVE



Edition 1/3 | Plywood, rattan, wool, painted aluminium
200 × 225 × 50 cm, 300 kg both pieces | Sold as a pair

Furniture | Cabinet [↗](#)
£ 30,000 - 35,000

RAED ABILLAMA ARCHITECTS

BOULOS BIZRI | METAL FOUNDER
SAKO ARABIAN | METAL SMITH

An homage to the city renowned for its endurance, **Beirut Stratum** brings to light the eternal rebirth of Beirut—and especially its port. A set of three tables, transposed on Beirut's topography, is a work in cast-bronze, using a one-time self-dissolving mould.

Architects Raed Abillama & Bianca Michailidis collaborated with a group of master artisans to turn each set into a unique creation. Master bronze craftsmen, using know-how honed for generations, created special moulds and techniques to ensure each table is unique in its finishing texture and oxidation. Together the table set tells the tales of the city, its varied aspects, and rich characters, as part of one unified whole.

Raed Abillama received his Bachelor of Fine Arts degree in 1992 and Bachelor of Architecture from Rhode Island School of Design in 1993. He later received his Master of Architectural Design Degree from Columbia University in 1994. He worked at Rafael Viñoly Architects in 1994 before returning to Lebanon in 1997.

Bianca Michailidis joined Raed Abillama team in 2002 and has been heading the Interior Design Department since then.

EXHIBITIONS AND RESIDENCY

- 2021 Outstanding Property Award London (OPAL) for First National Bank headquarters
- 2016, 2013, 2011, 2010 Green Good Design Awards for Villa LRA, FNB HQ, IXSIR Winery, Faqra Degrees, Mada projects
- 2015 Arch Marathon Award for IXSIR Winery
- 2014 "Element" by Raed Abillama Architects – Beirut Arts Center (BAC) – Beirut, Lebanon
- 2014 Holcim Award for Beirut Pine Forest
- 2011 Selected by CNN as one of the World's Greenest Buildings for IXSIR Winery



Beirut Stratum

LIVE



Edition 1/1 | Cast bronze
Each 40 × 65 × 30 cm, 25 kg | Sold as one lot of 3 elements

Furniture | Table [↗](#)
£ 25,000 - 30,000

× TATIANA AKL & MAYA SAFI

GHAZAR MAMIGONIAN | METAL WORK
JOY HADDAD | PAINTWORK

An oasis is often seen as a symbol of refuge, tranquillity, and abundance in an otherwise arid and harsh environment. It represents a haven amidst the barren desert, offering respite, refreshment, and a sense of discovery. Just as an oasis is a meeting point for travellers seeking rest and companionship, this furniture piece serves as a central gathering place for people to come together, interact, and socialize. It's a multifunctional centrepiece that encourages conversation and connection. These colourful metal units serve as both stools and side tables and can be stacked together to create an integrated coffee table.

With a Bachelor's degree in product design from L'Académie Libanaise des Beaux-Arts (ALBA) and a Master's degree in fashion studies at Parson's The New School, Tatiana co-founded Exil collective. Driven by social innovation, the creative industry, and the artistic scene, Tatiana juggles between creative projects, working as a creative and art director, and taking on social initiatives for different NGOs to establish their online presence while also assisting on the ground when needed.

Maya Safi graduated from L'Académie Libanaise des Beaux-Arts (ALBA) with a Bachelor's degree in Product Design. Her interest in furniture design was sparked during her trainee period at Vitra International. This led her to pursue a Master's degree in Product Design at the Nuova Accademia di Belle Arti (NABA) in Milan. She has a minimalist design approach and focuses on finding solutions to everyday problems.

EXHIBITIONS AND AWARDS

EXIL COLLECTIVE

- 2023 "Beirut, The Eras of Design" collective exhibition at mudac – Lausanne, Switzerland
- 2023 "Milan Design Week" – Milan, Italy
- 2021 "Dubai Design Week" – Dubai, UAE

MAYA SAFI

- 2022 "Nature Created by Design" virtual exhibition "Correspondances," thesis project exhibited at the Shanghai Institute of Visual Arts – Shanghai, China
- 2020 "Dubai Design Week" – Dubai, UAE
- 2019 "Beirut Design Fair" – Beirut, Lebanon
- 2018 Awarded the Know Your Roots award at the Beirut Design Fair for Elias the olive spoon



Chromatic Oasis



Edition 1/1 | Metal | Coffee Table: 40 × 178 × 60 cm, 45.9 kg; Side Table: 50 × 52.6 × 42 cm, 15.5 kg; Stool 1: 45 × 50 × 50 cm, 13.15 kg, Stool 2: 45 × 45 × 45 cm, 10.15 kg | Sold as a one lot of 4 elements Furniture | Table [🔗](#) £ 2,500 - 4,000

SAMER ALAMEEN

WOOTTON CREATION | ROPE ELIE MORCOS | BRASS AND ELECTRICITY

Samer Alameen's designs are inspired from existing objects which he then transforms into functional products with a playful twist.

He began by collaborating with a rope weaver, whose dextrous hands intertwined strands of fabric to create a cord that is the perfect thickness and texture. Next, working with a woodcarving artisan and a resourceful skilled electrician, he created **Bobbin Hood**, an iconic piece that allows you to move the light with you as you go. **Bobbin Hood** plays a dual role: it is a standing light that can double as a table lamp.

Samer Alameen's work is informed by history, treasured memories, and a sense of tradition. He reinvents the objects he creates, adding a new layer of purpose and context where appropriate.

Born in Beirut-Lebanon in 1971, he graduated from the Lebanese American University (LAU) with a double major in Fine Arts and Advertising in 1992, going on to work for a variety of prestigious agencies. In 2014 he completed a Master's degree in industrial design at Scuola Politecnica di Design (SPD) in Milan and where he opened his studio in 2016.

EXHIBITIONS

- 2019 "Italian" Design at the Saatchi Gallery – London, UK
- 2018 "Open House" – Milan, Italy
- 2016 "Ladies and Gentlemen" – Milan, Italy
- 2016 "Pattern interrupted" – Milan, Italy
- 2012 "Walking object" at Smogallery – Beirut, Lebanon



Bobbin Hood



Edition 1/5 | Brass, natural cotton rope
90 × 35 × 20 cm, 36 kg

Lighting [↗](#)
£ 5,500 - 6,500

ATELIER ASSAF

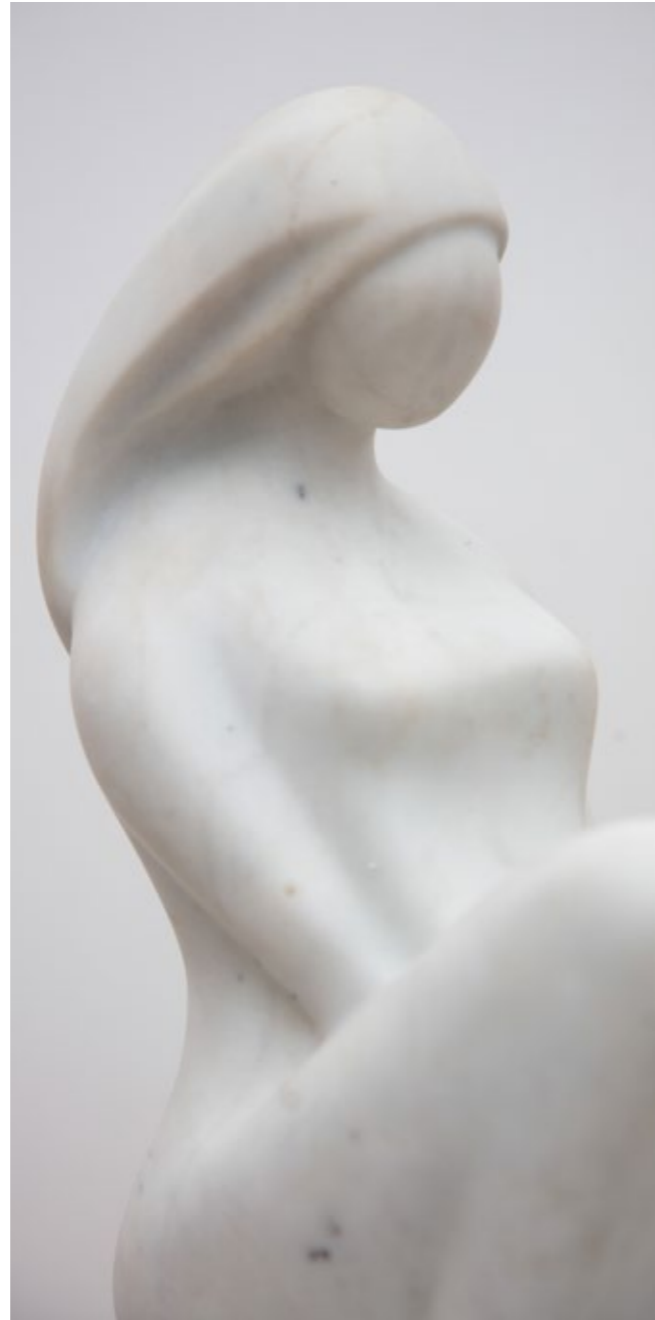
The Assaf brothers' Carrara marble statue is an homage to the womb of women. Where generations rise, and humankind moves forward.

Assaf, Mansour & Aref Assaf have put their stone sculpting artistry to follow every curve, chiselling every line to better sublimate the wonders of birth.

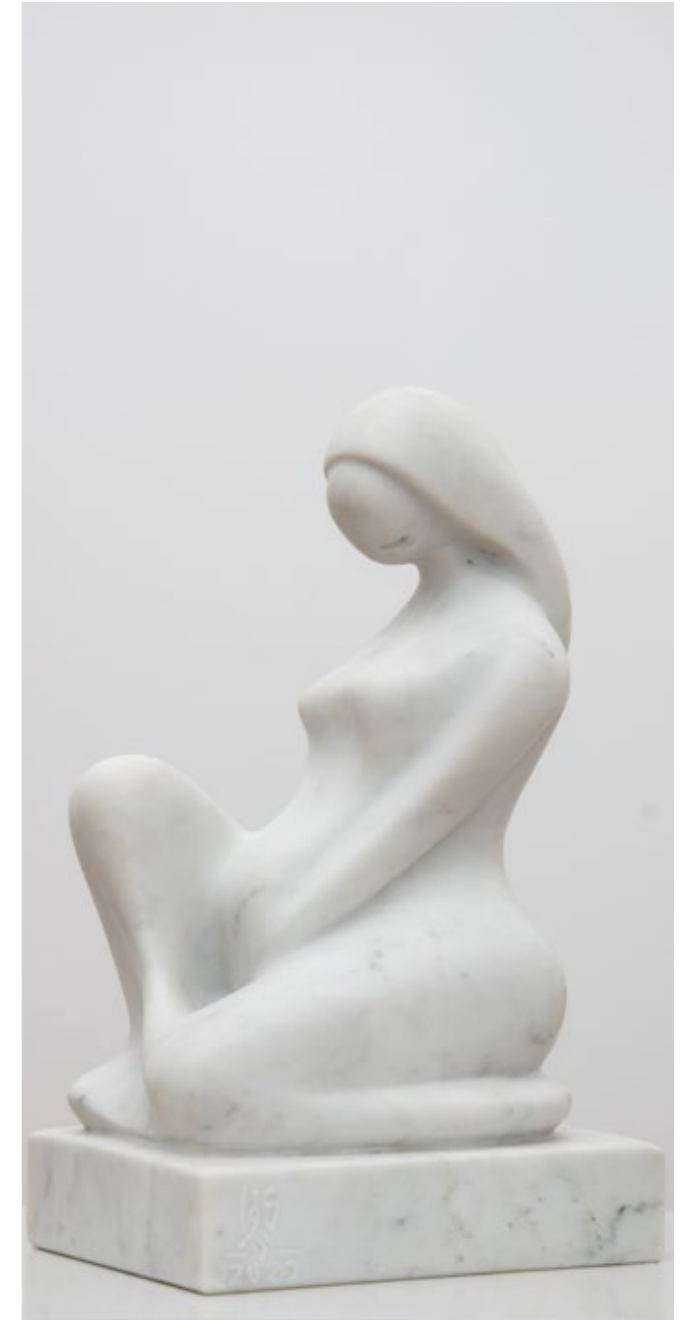
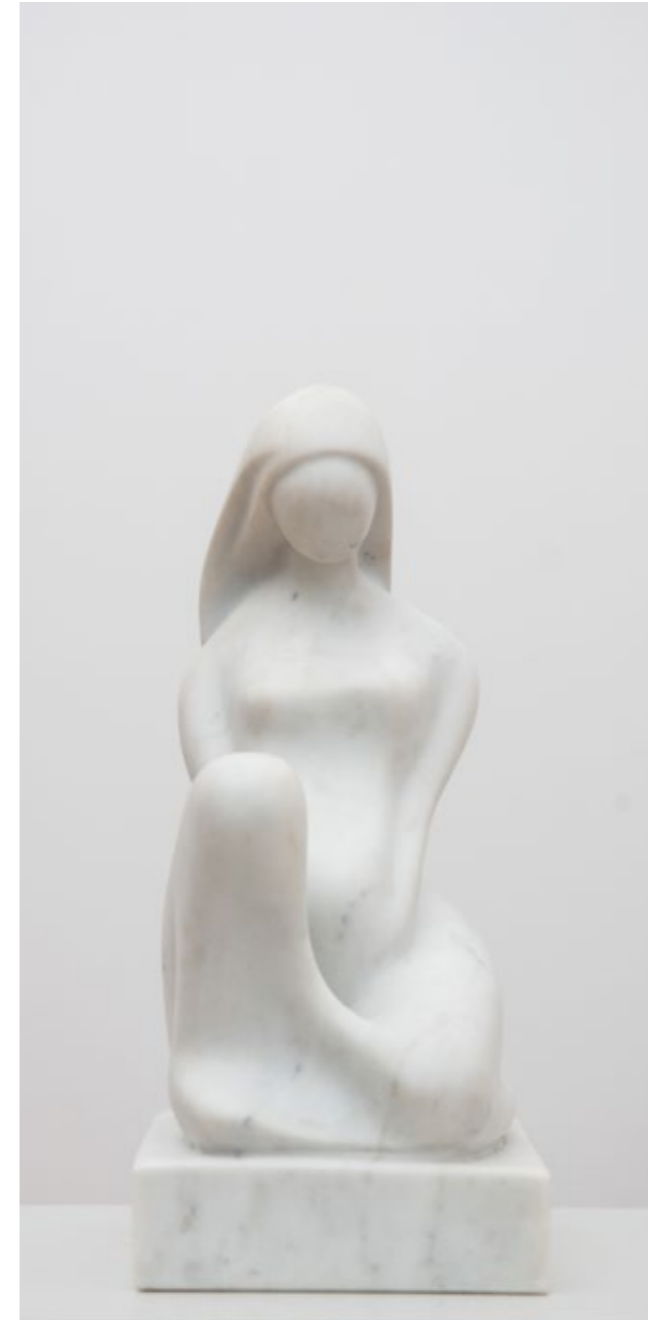
Pregnancy is a testament to their admiration to mothers that be: the women who hold the beginnings of life. And carry it with love and hope.

The Assaf brothers founded Atelier Assaf where they have been honing their art and craft. It is a cultural, artistic, and eco-touristic project that sits quietly in the Shouf Caza, and embodies the harmony that exists between nature, culture, and art.

They learnt to sculpt from their father Kamel Assaf and were influenced and mentored by their godfather, the artist Aref Al Rayess, as well as their uncle, the artist Fouad Al Warhani.



Pregnancy



Edition 1/10 | Carrara marble
32.5 × 14 × 19 cm, 10 kg

Decorative object [🔗](#)
£ 4,000 - 6,000

ATELIER L'INCONNU BY FADI YACHOUI



BOISSELIERS DU RIF | WOOD

Two bar cabinets, designed by Fadi Yachoui, serve side by side, distinguished by individual features and wondrous interiors. Seemingly detached, yet they share a concealed connection. **A Bird in the Hand** of one cabinet hides a piece of its counterpart: the key to switching on its balancing light fixture, found buried deep inside a hidden drawer. Though complementary when together, they often switch keys when they part ways to serve individually. But in this case, a bird in the hand can evidently be worth one more.

The talented textile craftsman dressed and accentuated the hand-crafted French oak, while artisans sculpted and polished the brass doors that enclose the wondrous interiors of these two bar cabinets, conceived to house an intricate display of bottle and glassware compartments, as well as storage and preparation shelving.

Fadi Yachoui studied architecture at the Lebanese American University (LAU) in Lebanon and École Spéciale d'Architecture in Paris. Following graduation in 2013, he gained years of professional experience at Bernard Khoury / DW5 in Beirut and Piero Lissoni Associati in Milano before graduating with a Master's degree in 2018 in Industrial Design from the Scuola Politecnica di Design in Milano.

EXHIBITIONS AND ACHIEVEMENTS

- 2022 Salone del Mobile – Milan, Italy
- 2022 Dubai Design Week with House of Today – Dubai, UAE
- 2021 PH-13 project won the gold prize for the interior design category for MM award and was featured in Vogue Italia and ArchDaily
- 2021 Winner of Express Yourself competition for Lavazza the Italian coffee company



A Bird in the Hand

LIVE



Edition 1/8 | Natural French oak wood, polished brass, textile
The bird: 188 × 150 × 80 cm; The spark: 193 × 170 × 79 cm | Can be sold separately

Furniture | Cabinet [↗](#)
£ 40,000 - 45,000
Sold as pair

MAHMOUD BARBOUR

With an artistic approach influenced by the art of the West, creative artisan Mahmoud Barbour has brought his handicraft to this unique table—where his mastery of rattan intermixes with that of flower arrangement.

Under his well-honed hands, rattan shapes and forms rise and twist unexpectedly, spinning tales of exuberance and optimism.

The resulting **Curved Symbolism** piece invites and challenges the viewer to explore the different crevices and discover the exceptional wicker lines that define positive and negative spaces.

Like generations of Barbours before him, Mahmoud can be found at his family business every day, working alongside his father Maher, continuing the family legacy of weaving beautifully intricate stories with his artistry. Their work can be found in several Lebanese landmarks such as the Albergo Hotel.



Curved Symbolism



Edition 1/1 | Metal, natural 6mm rattan core
80 × Ø 80 cm, 11 kg

Furniture | Table [↗](#)
£ 2,500 - 3,500

MARC BAROUD

× SHOPFIT | WOOD AND ALUMINIUM

Marc Baroud is a cross-disciplinary designer, navigating between different applications of design and creating links and mixes between them. His passion for design, puts him in constant quest for identifying the people, methods and techniques that can make his ideas possible.

To develop the **Flap Series Totem**, he called on the expert carpentry skills of a renowned artisan to construct a structure that also serves as pivots for the doors. Next, designer and craftsman, combined their know-how and skills to build a system that allows the piece to be accessible from all sides.

The result is a totem-like structure, that doubles as a functional sculpture.

Marc studied Interior Design and Furniture Design at the Académie Libanaise des Beaux-Arts (ALBA), followed by Product Design at ENSAAMA - Olivier de Serres. After founding his practice, he developed projects in different fields: Brand Development, Commercial Architecture, Product Design, Furniture Design, Interior Design, and Architecture

EXHIBITIONS

- 2016 “Leatherscapes” solo show at Design Miami Basel—Basel, Switzerland
- 2013 “Wires Series” solo show, in collaboration with Marc Dibeh at Design Miami—Miami, USA
- Permanent collections of the Musée des Arts Décoratifs (MAD)—Paris, France and musée cantonal de design et d'arts appliqués contemporains (mudac)—Lausanne, Switzerland, as well as in private collections



Flap Series Totem



Edition 1/1 + 1 A/P | Solid oak, aluminium
167 × 38.5 × 38.5 cm, 40 kg

Furniture | Shelving [🔗](#)
£ 8,000 - 10,000

ALEXANDRA BASSIL & CHARLES NAKHLE

ALI JAWAD | METAL WORK

LOMB, which stands for Land of Make Believe, is inspired by the time-honoured Lebanese wicker basket. For Alexandra Bassil and Charles Nakhle, the idea first originated with the lively motion of a thrown rope, symbolising everlasting movement, infinite possibilities, and the unbroken thread of tradition—that of wicker baskets moving down balconies in charming old Beirut neighbourhoods.

With help from artisan metal workers, they reinterpreted the classic wicker basket into metal. It combines simplicity and utility and can be used for decoration and storage. After all, **LOMB** is not just a tribute to Lebanon's heritage but a nod to the power of imagination and creativity.

Alexandra's curiosity and love for exploration sparked her interest in Product Design at an early stage, leading her to graduate from the Académie Libanaise des Beaux-Arts (ALBA) with Honours. As a Product Designer, she is able to express both her imaginative and pragmatic sides.

Charles holds a Bachelor's degree in Product Design from the Académie Libanaise des Beaux-Arts (ALBA). He has gained extensive experience in high-volume industrial design, specialising in electronic consumer goods, and has expertise that encompasses the intersection of aesthetics and functionality, creating innovative solutions that cater to the market's needs.

EXHIBITIONS AND ACHIEVEMENTS

- 2021 Dubai Design Week Alexandra designed a linen tissue box for Exil Collective – Dubai, UAE
- 2021 Dutch Design week – Alexandra won 1st prize in Beirut Identity, an international design competition after the August 4th blast – Eindhoven, The Netherlands

- 2014 Squad Design '10 100 1000' global competition won by Charles for his design of a wooden stool using traditional wood crafting techniques
- 2015-2019 Charles designed a custom fit earphones, solving a daily problem for 250 million consumers



LOMB: LAND OF MAKE BELIEVE



Edition 1/3 | Stainless steel
45 × 27 × 27 cm, 5 kg

Decorative object [↗](#)
£1,000 - 1,500

OMAR BASSIL

× ANTOINE MICHEL EID | METAL WORK

Omar Bassil's **Scarecrow** is a standing mirror and coat rack, whose structural elements serve as hanging points for a hat or a coat. Created to be placed in the home's entranceway, it's the first thing that greets you when you come home and the last element you interact with when you leave.

His idea was realised through the handcraft and skill of local metalworkers. The centrepiece is a thin frameless mirror, raised by a structure of hand-brushed aluminium rods, all held together seamlessly by stainless steel screws.

It's a piece of crafted art that can integrate seamlessly into people's daily lives, yet emboldened with a touch and twist of the unexpected.

Omar Bassil graduated in 2021 with a degree in product design from l'Académie Libanaise des Beaux-Arts (ALBA). He has worked with Exil Collective as an in-house designer since, in tandem with freelance work.



Scarecrow



Edition 1/1 | Aluminium, mirror, stainless steel screws
190 × 65 × 40 cm, 18 kg

Lifestyle [🔗](#)
£1,200 - 1,800

YOUSSEF BASSIL

× GHAZAR MAMIGONIAN | ALUMINIUM CASTING

The **Olive** stool is a tribute to Youssef Bassil's grandfather, a diligent olive farmer, and a wooden stool he crafted decades ago. Drawing inspiration from the object his grandfather had built out of necessity, Youssef embarked on a journey to recreate its essence using the materials and techniques of today, opting for recycled aluminium and employing the craft of sand casting.

This homage to tradition and innovation intertwines seamlessly in the **Olive** stool, breathing new life into the familiar form. The recycled aluminium not only embraces sustainability but also adds a contemporary touch, honouring the timeless wisdom of repurposing. Through the meticulous sand-casting process, the stool becomes an embodiment of heritage and craftsmanship, encapsulating the passage of time and the stories woven within.

Youssef Bassil studied product design at the Académie Libanaise des Beaux-Arts (ALBA). He is currently pursuing a Master's degree at the Ecole cantonale d'art de Lausanne (ÉCAL) Switzerland.

EXHIBITIONS

- 2023 "Under Design Lebanon" at Isola - Milan Design Week - Milan, Italy
- 2023 "Beirut, The Eras of Design" collective exhibition at mudac - Lausanne, Switzerland
- 2022 "État de Siège" exhibition at Galerie Tanit - Beirut, Lebanon
- 2021 "Exil Collective launch" at Beirut Concept Store, Dubai Design Week - Dubai, UAE



Olive



Edition 1/1 | Aluminium
50 × 26 × 26 cm, 11.5 kg

Furniture | Seating [↗](#)
£1,000 - 1,500

× ETIENNE BASTORMAGI

PIERRE SEVADJIAN | METAL WORK

My Dressing Room is a multi-functioning object of design and desire, conceived by Etienne Bastormagi.

The designer called on the unique skillset of a metalworking artisan to bring the structure to life.

Calibrating, smelting, shaping, and polishing; every step required artistry and rigor to develop the stainless steel and copper shape—especially because it has many roles to play.

First, it acts as a screen and space divider, then it can be also used as an impromptu clothes hanger. And finally, the flat panels turn into volumes that can create a separator for a small dressing room.

Etienne Bastormagi maintains a strong dialogue between architecture and design as a conceptual engine of transition to carry out his projects. In 2017, he co-founded the Boba brand of thoughtful minimalist objects. Its pieces are centred on new behavioural adaptations and exhibited in galleries & international fairs.

EXHIBITIONS

- 2023–2017 *Fuori Salone* at Milan Design Week – Milan, Italy
- 2023 “Beirut, The Eras of Design” collective exhibition at mudac – Lausanne, Switzerland
- 2022 Dubai Design Week – Dubai, UAE
- 2019 Paris Design Week – Paris, France
- 2018 Beirut Design Fair – Beirut, Lebanon



My Dressing Room



Edition 1/5 | Stainless steel, stainless steel cables, copper
175 × 200 × 45 cm, 120 kg

Furniture | Cabinet [🔗](#)
£ 6,000 - 8,000

CARLA BAZ

× **BOISSELIERS DU RIF | WOOD AND STAINLESS STEEL**
AUDI FOUNDATION WITH SARAFAND
GLASS BLOWERS | GLASS

Fleeting Haze “لحظة من غيمة”, is a portable cocktail set inspired by the light and refreshing qualities of Lebanese Arak. Each set includes everything you need to create the perfect Lebanese Arak cocktail, no matter where you are.

To develop it, Carla Baz collaborated with a team of passionate artisans which included a woodcrafter, a glass blower, and a stainless-steel smith, thereby nurturing the link between the hand that draws and the hand that makes. Together they worked innovatively, transferring knowledge and reinterpreting techniques to modernize craft and create a distinctive product.

Having studied Interior Architecture at ESAG Penninghen in Paris followed by Product Design for the Luxury Industry at the University of Art and Design Lausanne (ECAL), Carla Baz moved to London upon completing her Master's degree to work with renowned designers, including Vivienne Westwood and Zaha Hadid. She is the winner of the Brussel based Boghossian Foundation's 2013 Design Prize, Maison & Objet's 2018 Rising Talent award, and Architectural Digest's 2022 Best Product Design award.

EXHIBITIONS AND AWARDS

- 2023 “Beirut, The Eras of Design” collective exhibition at mudac – Lausanne, Switzerland
- 2023 Collectible Fair – Brussels – Belgium
- 2022 “Art of Living” with *Architectural Digest Middle East* – Abu Dhabi, UAE
- 2018 Maison & Objet, Rising Talent Award Winner – Paris, France
- 2016 “Jungle Protocol” Design Biennale at House of Today – Beirut, Lebanon



Fleeting Haze

لحظة من غيمة



Edition 1/1 | Wood veneer, blown glass, stainless steel
35 × 50 × 35 cm, 11.5 kg

Decorative object [↗](#)
£ 8,000 - 10,000

× AHMAD BAZAZO

ELIE MORCOS | WOOD
NAHLA SUKARIYEH | WEAVING
NOURE FOUAD KARAJAH |
UPHOLSTERY

The Palmyra Hotel in Baalbek is a landmark which has stood for almost 150 years. This charming hotel facing the grand ruins of the city, still maintains its old-world heritage and style. They say if the walls of the hotel could talk, they would tell a story of ups and downs, times of opulence and times of devastation, times of parties, and times of war.

If Walls Could Talk is inspired by the forgotten glory of the Palmyra Hotel. Working in partnership with an artisan wood maker, Ahmad Bazazo created a piece that invites conversation. A world-class upholsterer covered it in blue velvet, an opulent material made from natural wool fibres weaved by craftswomen in the mountains of Baalbek itself.

Ahmad Bazazo is a Beirut-based architect and multidisciplinary designer focusing on the creation of high-end objects and spaces meant to trigger the mind as well as the senses. He likes to challenge the notions of traditional design by pushing the boundaries of material experimentation and precision to create objects of the highest possible quality.

EXHIBITIONS

- 2023 "Beirut, The Eras of Design" collective exhibition at mudac – Lausanne, Switzerland
- 2019 "Ventura" – Milan, Italy
- 2019 "Minjara Editions" – Paris, France
- 2018 "Beirut Design Fair" – Beirut, Lebanon
- 2017 "Dubai Design Week" – Dubai, UAE



If Walls Could Talk



Edition 1/5 | Wood, velvet, wool
70 × 168 × 120 cm, 50 kg | Sold as a pair

Furniture | Seating [↗](#)
£ 8,000 - 10,000

BITS TO ATOMS

BY GUILLAUME CREDOZ

The **Furry Armchair** pays homage to the traditional image of pelts stacked on high-back chairs by the fireplace, but with a touch of gentle irony. With its commanding height, sculptural presence, and contrasting textures, each chair is an impressive piece, both in size and design, inviting you to nestle comfortably within its voluminous form.

The **Furry Armchair** represents a significant milestone; for it is the first 3D printed chair in the upright position. Made from 100% recycled polycarbonate which can be used in or outdoors, its unique appearance is achieved through a meticulously crafted algorithm, resulting in a blend of complexity and organized randomness.

Through the combination of coding, robot engineering, and innovative design, architect Guillaume Crédoz and the Post-Industrial Crafts team developed the strategies that have enabled the rise of 'emergent objects' that were previously unimaginable. The **Furry Armchair** embodies an exciting moment in design history, one where craft takes on new meaning, and endless possibilities.

Following an education in Architecture and Environment Design, Guillaume Crédoz established an entirely virtual practice, working solely in 3D for Architecture offices, followed by a six-year chapter of teaching and research at universities. After establishing several practices in different countries, he started Bits to Atoms, a practice that explores the potentials of digital manufacturing to extend the capacity of crafts in both Architecture and Design. Recently, Post Industrial Crafts, the sister company issued from the Bits to Atoms research opened in Saint Etienne, France to commercialise digitally fabricated furniture.



Furry Armchairs



Edition 1/2 and 2/2 | 100% Recycled polycarbonate
Each 132 × 87 × 85 cm, 65 kg | Sold as a pair

Furniture | Seating [↗](#)
£ 10,000 - 12,000

BOISSELIERS DU RIF

The Sands of Time is a special edition keepsake for holding watches, keepers of the hands of time.

Designed by Boisseliers du Rif, this exceptional wooden box is handcrafted by the impeccable skills of their team of artisans to the exacting standards of the Rif signature.

Using a time-honed painting technique, the master painter creates a multiple layer colour palette, and fuses these colours together to create a seamless gradient throughout the piece. He then applies a signature full gloss lacquer and polishes it after curing in a multi-stage sanding and polishing process to achieve a crystal-clear mirror finish.

The interior is dressed in a precious amber-coloured Alcantara fabric under the expert hands of the upholsterer, while hand-sewn watch cushions and separations finish the piece.

The box is wrapped in a unique patina effect, that showcases their craftsmen's skill in the control of the aging process.

Boisseliers du Rif is the story of three generations that mastered, perpetuated, and elevated the craft of woodworking into fine art. Their story begins just over 100 years ago, amid the uncertainty of the First World War, where founder Hanna El Rif opened his first workshop in his native village in Lebanon. Years later, his son Joseph took over and expanded the workshop to create the Boisseliers du Rif of today. Joseph works alongside his son Jean-Marc, who continues his family's art and craft excellence, producing work for royalty, heads of state, government headquarters, five-star hotels, commercial retail spaces, and individual designers.



The Sands of Time



Edition 1/1 | Wood, fabric
32 × 23 × 14 cm, 3.5 kg

Decorative object [↗](#)
£ 2,000 - 3,000

BOKJA BY HUDA BAROUDI & MARIA HIBRI

BEIRUT BLOOMERS | BAMBOO AND RATTAN

A rattan-made daybed, gently rocking you to dream on a lazy spring afternoon, dressed in Bokja flower patterns.

Designed by Huda Baroudi and Maria Hibri, its workmanship was entrusted to the know-how of rattan artisans, weaving their lines around and across the bed. The fabric, a Bokja forte, was fitted around the rattan frame by talented upholsterers. It is an ode to craftsmanship, which is at the heart of every design by Bokja collective.

Baroudi and Hibri's BOKJA is a collective of like-minded creatives who celebrate otherness. Named after a regional word denoting a bundle or a piece of fabric that was used to wrap the dowry of a bride, the Beirut-based studio brings together creatives and craftsmen across borders to make, provoke and delight.

EXHIBITIONS

- 2023 "Let's talk about the weather" The Ring of Life at Dubai Design Week - Dubai, UAE
- 2023 Migration "Love Boat" in the permanent collection curated by Li Edelkoort and Raffaele at Van Abbemuseum - Eindhoven, The Netherlands
- 2017 Aubusson Tapestry at Hôtel de Crillon - Paris, France
- 2013 The Sufi Series, Contemporary Art Platform (CAP). At Design Days Dubai - Dubai, UAE
- 2012 Permanent collection of the Institut du monde arabe (IMA) - Paris, France
- 2008 ALEF Al Sabah Art & Design Collection at Miami Design District/Art Basel - Miami, USA



Buckle up! The Daybed that Rocks



Edition 1/1 | Bamboo, rattan, Bokja embroideries
70 × 170 × 68 cm, 26 kg

Furniture | Seating [↗](#)
£ 5,000 - 7,000

STEPHANIE BOUERI

The sprouting **Shapes of Nature**, ever-changing, ever evolving, are forever moulded as a moment in time in Stephanie Boueri's twin vase sculptures. The vases were conceived with distinctive caps, sculpted to stand alone as art pieces, or hold centre stage on a coffee table.

Carved to be round and smooth, yet shaped to be sharp and bold, in her masterful hands they embody nature's symbiotic relationship with man.

As both the artisan and artist of the piece, Stephanie Boueri's ceramic work is about creative visual expression that transcends traditional media into the more tangible world of art.

Her play with clay is an invitation to get away from reality to a world of unrestricted fantasies where colours and shapes escape the boundaries of reason and allow her to be truly free.

Born in 1976 and raised in Beirut, to a German mother and a Lebanese father, Stephanie Boueri graduated in Graphic Arts and Advertising from the Holy Spirit University of Kaslik (USEK) in 1999.



The Shapes of Nature



Edition 1/2 and 1/2 | Earthenware, white clay, white dip
Vase 1: 34 × Ø 24 cm, 3 kg; Vase 2: 43 × Ø 26 cm, 3.5 kg; | Sold as one lot of 2 vases

Ceramics [🔗](#)
£ 2,500 - 4,000

NEVINE BOUEZ

Tidal Waves is the masterly tale of waves at sea, carved and sculpted into shape through Nevine Bouez's artful hands.

These wave shapes were exquisitely crafted to capture the subtle yet continuous changes in our emotions, feelings, memories, and expectations. And when brought indoors, they artfully reflect nature's transitions and transformations.

Their undulation speaks to the transformative and healing power of Mother Earth and human nature alike.

Nevine Bouez's sculpture also takes on a more relevant role today. It is a bold reminder of the Waves in Her Hair movement, a symbol of Iranian women's fight for freedom.

Following her Master's degree in Fine Arts at the Oxford School of Design, Nevine Bouez delved into a wide array of artistic mediums over the years. Art is an integrative part of her life, and her journey has evolved from painting, etching, interior decoration, and intricate porcelain design, to her passion for hand-built ceramics.

EXHIBITIONS

- 2022 "Beneath the Water, the Earth Takes Shape" solo exhibition curated by Clemence Cottard Hachem at Galerie Tanit-Beirut, Lebanon
- 2020 Donated two works to benefit the Elisa Sednaoui Foundation, as part of the contemporary curated sale at Sotheby's London
- 2019 "From Mud to Gold" at the Beirut Design Fair - Beirut, Lebanon
- 2018 Solo exhibition at Galerie Janine Rubeiz -Beirut, Lebanon and Abu Dhabi Art
- 2018 "Tarbouch" at the Beirut Design Fair - Beirut, Lebanon
- 2017 Audience Choice Award at the Salon d'Automne of the Sursock Museum - Beirut, Lebanon



Tidal Waves



Edition 1/1 | Multiple glazing, gold glaze on ceramic stoneware
70 × 40 × 10 cm, 5.5 kg

Ceramics [↗](#)
£ 2,500 - 4,000

OMAR CHAKIL



MARMGROUP | ONYX
THE PIECEMAKERS | WOOD

Mother & Child is a two-piece bench inspired by the essence of motherly love. The two elements are interdependent, inseparable but also possibly autonomous— like every mother and her child.

Omar Chakil's brainchild took a team of skilled artisans to achieve. The oak base was hand carved by rigorous woodworkers, giving the irregular lines an artistic character. The stone carvers used their artistry to cut, polish and finish the striking onyx top, its smoothness a perfect contrast to the curves and shapes that embrace it.

The two elements were designed and crafted to work together as a two-height bench, or separately as two stools or two small tables.

Omar Chakil was born in Beirut to a Lebanese mother and Egyptian father. He was raised in Paris, where he began his journey as a singer songwriter in the late 90s. But before long, he discovered a passion for interior design, which took him to reinventing homes around the globe. In 2016, he launched a collectible objects series, and in 2022, was selected in AD Middle East Top 50 list.

EXHIBITIONS AND HONORS

- 2022 "Made in Egypt Collectible Design" solo show at Le Lab and New York Salon - New York, USA
- 2021 Designer of the Week at Expo Dubai - Dubai, UAE
- 2020 Record selling pieces at auction at Piasa-Paris, France
- 2019 Collaborative shows at Nomad - St Moritz, Switzerland | Christies - London, UK | Boon -Paris, France | ATHR Gallery - Jeddah, KSA
- 2019 and 2018 Solo exhibitions at Over the Counter - Beirut, Lebanon



Abstraction: Mother & Child



Edition 1/5 | Oak, Iranian onyx
47 × Ø 55 cm, 26.75 kg; 42 × Ø 45 cm, 23.5 kg | Sold as a pair

Furniture | Seating [↗](#)
£8,000 - 10,000

GEORGES CHEIKH

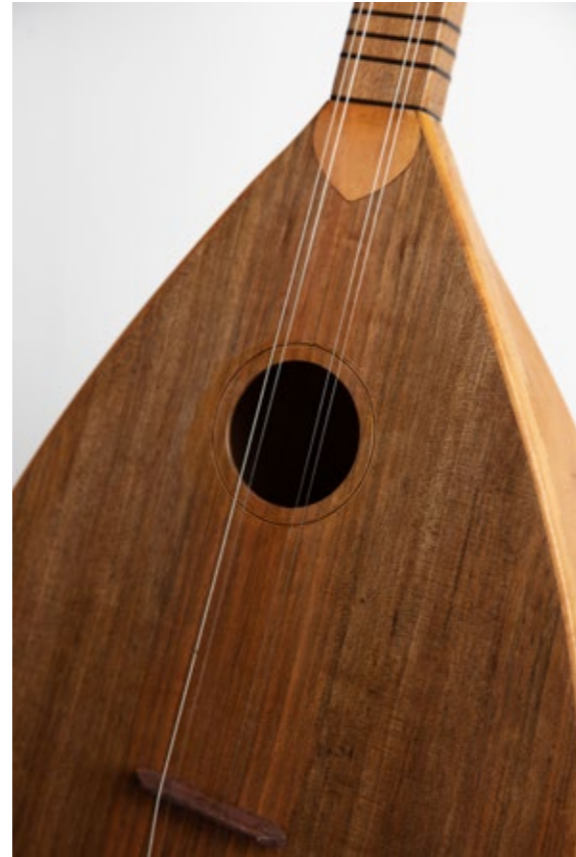
Georges Cheikh brings his art and passion for woodwork and music to create and craft a unique buzuq, dedicated to a special Lebanese musician, Mehye el din Baayoun.

Their common attachment to their mother land is the reason this buzuq was solely carved from Lebanese wood: St Lucie cherry wood from Zahlé, and walnut wood from Akkar

It is as beautiful to look at, as it is to listen to. And it holds within the layers and depths of its wood carvings the hopes and dreams of those who listen to its timeless rhythms.

EXHIBITIONS

- 2022 “Ahl El Dar” exhibition in Dar Onboz – Furn El Chebbak, Lebanon
- 2022 Christmas Fair at Geahchan Home – Beirut, Lebanon
- 2022 “The Sun Is My Only Ally” exhibition by Charbel Joseph Hajj Boutros at La Criée Centre d’art – Rennes, France



Baayoun



Edition 1/1 | St Lucie cherry wood, walnut wood
95 × 26 × 20 cm, approx . 3.5 kg

Lifestyle [🔗](#)
£1,000 - 1,500

KAREN CHEKERDJIAN

MARMGROUP | MARBLE

The **Underwater Hanging Stone** table was inspired by Stonehenge, a perplexing prehistoric monument consisting of piled massive vertical and horizontal stones. This iconic table is made up of three, three-dimensional modules, independent of each other, yet together form one unit, an integrated whole.

By observing archaeological sites and studying the way marble and rocks were treated in historical monuments, Karen Chekerdjian designed a table that was brought to life by a team of stone carvers, in the same way as these various types of stone structures came to be, centuries ago.

The **Underwater Hanging Stone** table was shaped out of Ceppo marble, through the careful carvings of artisans' artful hands. It is designed and crafted to be timeless. Just like rock monoliths.

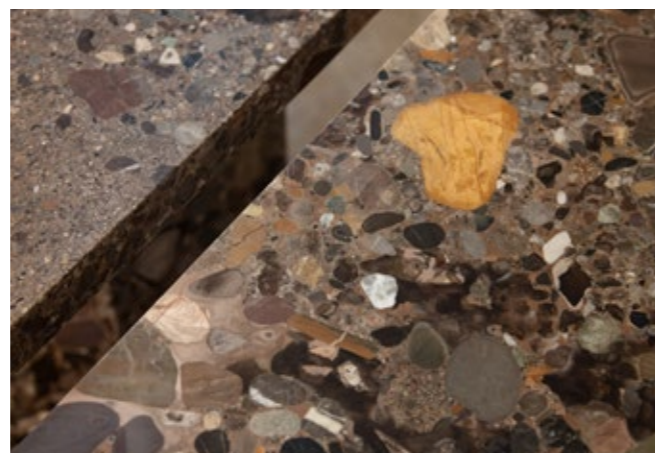
Karen Chekerdjian started out studying movie direction, before she entered the advertising world and graphic design field. She established one of the first branding agencies and decided to change careers at the age of 27, when she moved to Milan to pursue a Master's degree in Industrial Design at Domus Academy.

During this period of transformation, Karen met and collaborated with her mentor, Massimo Morozzi, a founding member of Archizoom and art director at Edra. During their time together, Karen produced her first piece, Mobil, which was edited by Edra in 1999 marking the beginning of her new path.

EXHIBITIONS

- 2023 "Beirut, The Eras of Design" collective exhibition at mudac - Lausanne, Switzerland
- 2016 "Respiration" at Institut du Monde Arabe - Paris, France
- 2015 "Trans|form" at Design Miami - Miami, USA

- 2015 "Trans|form" at Design Miami/Basel - Basel, Switzerland
- 2015 "Trans|form" at Beirut Art Centre (BAC) - Beirut, Lebanon
- 2008 "Echo" at Galerie Sfeir-Semler - Beirut, Lebanon



Underwater Hanging Stone

LIVE



Edition 1/5 | Ceppo marble

74 × 255 × 94 cm, when joined, 115 + 192 + 130 = 437 kg | Sold as one lot of 3 elements

Furniture | Table [↗](#)

£ 30,000 - 35,000

ZEIN DAOUK

× BOULOS BIZRI | METAL FOUNDER

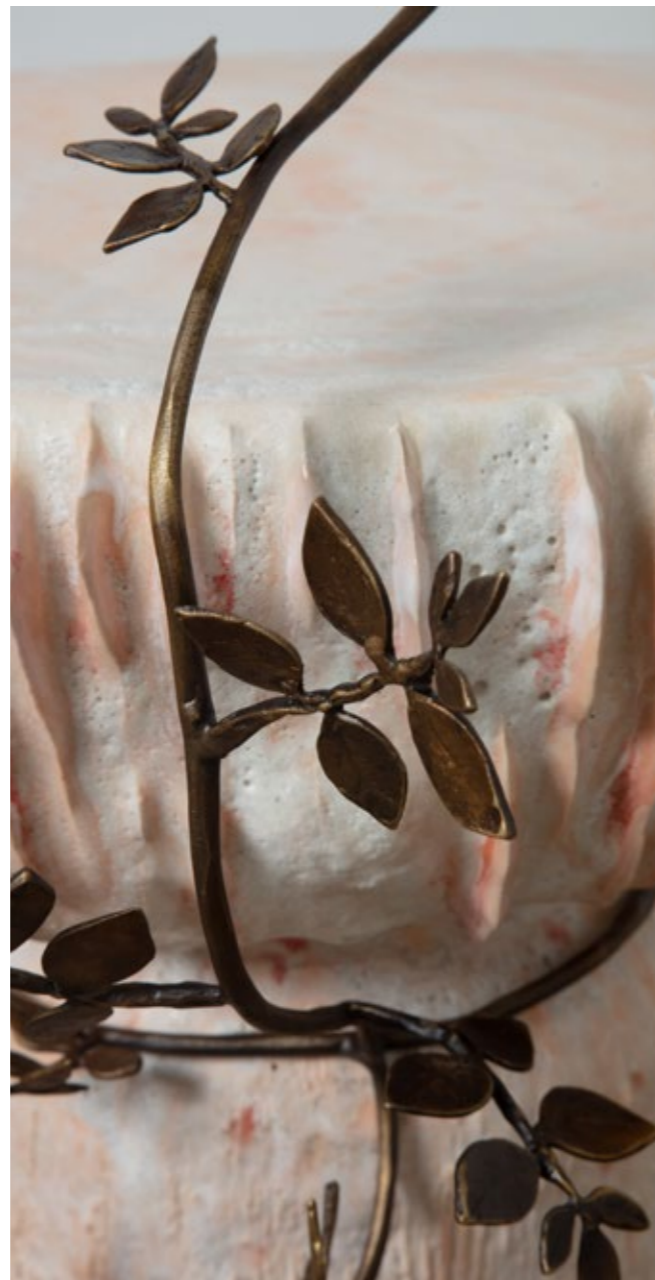
Exquisitely sculpted by Zein Daouk as part of contemporary ceramics and design, **Agaricus Roseum**- from the series Auspicious Agaricus- is rooted in expressionism with its emotive colour palette.

This masterfully shaped occasional table adds a flirtatious, cheerful and bright tone to its surroundings. Embraced with a bronze floral twig crafted by Boulos Bizri, it stands out with beautiful aesthetics, parading charm, roaming free, until a glass needs to settle. Only then, in that moment, does its enticingly sculptural form reveal its ingenious function. This whispered dialogue highlights the fluid narrative between sculptural design and functional objects, a theme central to Zein's work.

Zein Daouk graduated with a Bachelor of Architecture from the American University of Beirut (AUB). She is a multidisciplinary architect with an obsession for creating. Her journey into ceramics started in 1999 with Samar Mougharbel. She also joined Nathalie Khayat's studio and took courses with ceramicists such as Tortus (Eric Landon) and Marc Uzan.

EXHIBITIONS

- 2023 Collect Art Fair with PIK'D Gallery - London, UK
- 2022 Design Miami with Moderne Gallery - Miami, USA
- 2022 Salon Art + Design at Park Avenue Armory with Moderne Gallery - New York, USA
- 2022 Dubai Art Fair with Saleh Barakat Gallery - Dubai, UAE
- 2021 "The Third Kingdom" solo exhibition at Saleh Barakat Gallery - Beirut, Lebanon



AGARICUS ROSEUM



Edition 1/1 | Glazed stoneware, bronze
55 × 44 × 42 cm, 14 kg

Ceramics [🔗](#)
£ 4,500 - 6,500

NADA DEBS



FADI ATWE | CARPENTRY
SALIM & SAID ALAYAN | MOTHER OF PEARL AND TIN INLAY
AHMAD REMMO | WOOD CARVING
INAASH ASSOCIATION | CANE EMBROIDERY

Embracing the richness and multidimensionality of Lebanon's heritage and tradition of craft, Nada Debs' **Crafted Mandala** is her esoteric way to interconnect the region's diverse artistic expressions and transform them into something universal yet tangible. She weaves together the intricate threads of Lebanese craftsmanship, using tradition and modernity in a captivating tapestry of creativity.

Her creation centres around the Mandala, a symbol associated with the restoration of the body, mind, and heart. It is a representation of the universe and a transformative practice aimed at restoring inner peace and wisdom.

Inspired by ancestral practices, **Crafted Mandala** is the result of Debs' collaboration with various artisans from all around Lebanon, each specialised in their respective metier. The challenge was to channel the traditional skills they have been mastering for years, into a contemporary piece of furniture.

Through a cyclical stream of different forms of craft ranging from cane embroidery, mother of pearl inlay, carving, tin inlay, and colourful wooden veneer inlay, Nada Debs' vibrant amalgamation emulates the cosmic process of transforming the universe through its unity of crafts, cultures, people, and beliefs.

The "Creative Liaisons" project has enabled Nada to celebrate the artistry of generations past and present, and to harmoniously combine diverse craft techniques, into one holistic piece. One that embodies art and heritage in every touch and detail.

This **Crafted Mandala** is the first piece of the limited-edition *Crafted Mandala* collection which will be released in the future. Each Mandala will be unique and numbered.

AWARDS

- 2023 Grand Prix d'Honneur prize at the Institut du Monde Arabe - Paris, France
- 2022 *Architectural Digest Middle East* Designer of the Year
- 2021 *Architectural Digest Design* for Best Product Design for the *Transcendence Meditation Carpet*
- 2020 American University of Beirut (AUB) - The Randa Bdeir Leadership Award 2020
- 2013 Shortlisted for the Jameel Art Prize



Crafted Mandala

LIVE



Edition 1/1 | Maple wood, colored veneers, mother of pearl, tin inlay, cane embroidery, stainless steel | Ø 110 cm, approx. 80 kg

Furniture | Cabinet [↗](#)
£ 25,000 - 30,000

FABRACA STUDIOS BY SAMER SAADEH

× HAGOP SAMARDJIAN | WOOD TURNER
HAITHAM AHMED | WOOD CARVER
AYMAN AL-AHMAD | PAINTER
AHMAD RAHI | ELECTRICAL CONNECTOR

Never One Without the Other is a captivating floor lamp installation that embodies the seamless collaboration of craftsmanship and Samer Saadeh's artistic vision. Its design features a totem composed of repeated elements, gradually diminishing in width across five levels.

Crafted with meticulous attention to detail, this object showcases the mastery of three distinct materials that gradually unveil themselves from bottom to top, depending on the direction the artisans take it. It is a testament to the collective efforts of four skilled artisans, each entrusted with a pivotal role in the lamp's creation. Its ascent symbolizes the shared journey, where the work of one craftsman becomes the indispensable foundation for the next, from the bottom to its zenith.

Samer Saadeh, founder of Fabraca Studios, specializes in designing and manufacturing bespoke lighting and furniture collaborations between designers and craftsmen. His work combines vision and skill, resulting in a merge of contemporary aesthetics and traditional savoir-faire.



Never One Without the Other



Edition 1/1 | Wood, brass, fiberglass
160 × 20 × 20 cm, 13 kg

Lighting [↗](#)
£ 4,000 - 6,000

RABIH GEHA

CLOVIS & FREDERIC KARAM | METAL & WOOD FOR GEORGES AMATOURY STUDIO

Inspired by Lebanon, the country of contrasts, of beauty and turmoil, of hope and despair, this creation by Rabih Geha is a heartfelt representation of the soul of our nation. It presents a bold outline inspired by the shapes and contours of the land of the Cedars.

Its resolute, solid heart beats with strong, raw emotions to breathe life into the ethereal, gleaming cloud that envelops it. This juxtaposition between strength and resilience on one hand and frailness and fragility on the other, embodies the vivid contradictions that define Lebanon's spirit.

Rabih Geha's refined design required a team of artisans, and their handicraft to come to life. The metal workers, with their exquisite mastery of craft, gave shape to the polished stainless-steel frame. While a team of exceptional woodcarvers artfully hand-gouged the solid French oak wood.

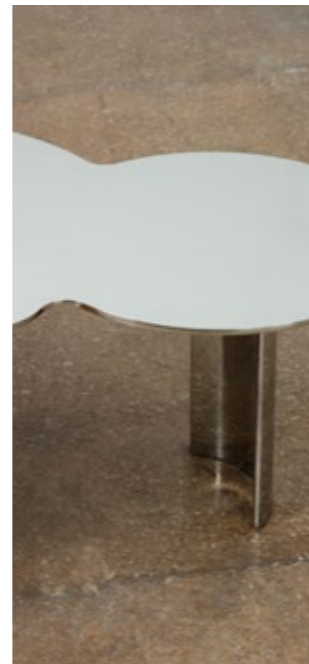
Rabih Geha is the founder of Rabih Geha Architects. He holds a B.A. in Architecture from the American University of Beirut (AUB) and earned his Master's degree from l'École Nationale Supérieure de Création Industrielle.

Between 2019 and 2023, Geha brought home several international awards and made the top influential designers' lists in the Middle East.

Over the past few years, Geha expanded his practice to Nigeria, UAE, KSA, Bahrain, Egypt and Qatar, took part in several talks, exhibitions and jury committees and had his projects featured in a number of international publications.

EXHIBITIONS AND AWARDS

- 2022 Architectural Digest Awards Winner Best Interior Design: Nisrine Restaurant – Doha, Qatar
- 2021 *Evolve* project at "The shape of things to come" exhibition – Dubai, UAE
- 2020 *Frame Night Fever Volume 6* Book Publication: *Best Clubs around the world*, AHM/2Weeks – The Netherlands
- 2019 Commercial Interior Design Awards: Interior Designer of the Year – UAE
- 2017 Villa Noailles – "La Boite de Nuit" Exhibition and Book Publication Uberhaus – France
- 2016 "House of Today" Exhibition – Lebanon



High Hopes



Edition 1/4 + 1 A/P | Polished stainless steel, hand gouged solid French oak wood
40 × 163 × 75 cm, 160 kg

Furniture | Table [↗](#)
£ 10,000 - 12,000

CARL GERGES ARCHITECTS

× MARMGROUP | MARBLE

The art of conversation has found the perfect setting, **Echoed**. Inspired by the traditional Arabic Majlis, **Echoed** is a contemporary interpretation of a conversation pit, where dialogues flourish, where tales enrich and enrapt.

Carl Gerges' architectural tour de force, required the skill set of stone carvers and masterly masons to sculpt the travertine marble into curved seaters around the fire pit. This creative partnership resulted in an exquisitely polished, intimate yet open setting for conversations to flow.

This is a stage, for stories told by our ancestors, vivid tales under starlit nights, of legends whispered by the winds, of secret hopes, and shared dreams. **Echoed** is also the place for dialogue across time and generations, under the eyes of the neighbouring moon, and embrace of the setting sun.

Carl Gerges is a multi-disciplinary architect based between Beirut, Dubai, and Paris. Having graduated from the American University of Beirut (AUB) with a degree in Architecture, Gerges likes to imagine a lifestyle centred around nature and mindful living through his designs. Paying equal attention to the interiors and landscaping, Gerges presents his projects as one whole, meticulously designed to transform their environments – and inspire a lifestyle unique to their locations.

EXHIBITIONS AND AWARDS

- 2022 *Architectural Digest's* Best Hospitality Project
- 2022 *GQ* Men of the Year Award
- 2021 List of 100 Contemporary Decorators from *Architectural Digest France*
- 2021 Identity Design Award for Best Residential Project in Dubai, UAE
- 2020 *ArchDaily* Best Young Practices Award



Echoed

LIVE



Edition 1/1 | Silver travertine marble
450 × 450 cm, approx. 4000 kg

Furniture | Seating [↗](#)
£ 30,000 - 35,000

GHAITH & JAD

BY GHAITH ABOU GHANEM & JAD MELKI

× ABED AL ALI | CONCRETE CASTING
KHATCHIK DER ARTINIAN | BRASS CASTING AND POLISHING
HADDAD WOODWORKS | CARPENTRY
MARMGROUP | CONCRETE POLISHING

A sculptural mirror, created to hold the viewer's gaze, and handcrafted to reflect a tradition of artisanship.

The mirrors' fuzzy back, in the shape of eyelids, came as a result of the flexible fibered mold used for the concrete casts. The grip of the concrete cast to the coconut fibres creates an organic and unique natural texture. The watery reflective surfaces are crafted by metal working artisans using cast brass with nickel finish.

Ghaith Abou Ghanem and Jad Melki, are architects who graduated from the American University of Beirut (AUB) in 2012, establishing their Beirut-based architecture and design studio GHAITH & JAD in 2013. Their work focuses strongly on issues of sustainability and the exploration of socio-political and cultural concerns. Whether it is the community of craftsmen they work with, the locally sourced material, or the re-purposing of the different sets created, transferability is always at a forethought of their designs.

EXHIBITIONS

- 2023 "Beirut, The Eras of Design" collective exhibition at Centre for Innovation and Design (CID) – Brussels, Belgium and at mudac – Lausanne, Switzerland
- 2022 "Portrait of Nation II" UAE's 50th Anniversary exhibition produced by Abu Dhabi Art and Music Festival – Abu Dhabi, UAE
- 2021 Art Design Lebanon's first exhibition – Beirut, Lebanon
- 2018 "House of Today Biennale", in collaboration with Wallpaper Store – Beirut, Lebanon
- 2016 American University of Beirut (AUB) 150th anniversary exhibition and pavilion – Beirut, Lebanon



Sight



Edition 1/1 | Cast aluminium, rough concrete, coconut fibres
Each 17.5 × 33.5 × 18 cm, 11 and 12 kg | Sold as a pair

Decorative object [↗](#)
£ 6,000 - 8,000

HICHAM GHANDOUR

RUDY AZAR AT TRUNK INTERIOR DESIGN | WOOD
ABDO RAHIMAN ALSHIK AT ABDO ART BRONZE | BRASS

A piece designed to surprise and delight: This simple, classic cabinet on the outside, hides a bright red life inside.

Hicham Ghandour likes to mix materials in his designs. And mix handicrafts.

He first collaborated with an artisan cabinet maker to create the wooden structure. Then, for the black casted brass details, he relied on the savoir-faire of a brass foundry, to give the cabinet an unexpected look and feel on the outside, and a surprise red colour on the inside.

Hicham Ghandour studied furniture restoration at Fashion Institute of Technology (FIT) in New York City and specialised in gilding restoration at Istituto per l'Arte e il Restauro (Palazzo Spinelli) in Florence, Italy. This specialisation was the first step to a career in furniture and gilded objects that started in 2002; when he had the chance to work in the gilding conservation department at the Metropolitan Museum of Art in New York City and with Ralph Lauren Home on prototype pieces of gilded furniture. Since 2016, Ghandour has been designing exclusive pieces of furniture for Nilufar Gallery in Milan, Italy

EXHIBITIONS

- 2019 Venice Design in collaboration with European Cultural Centre Venice, Italy
- 2017 Villa Audi collaboration with the Swiss Embassy – Beirut, Lebanon
- 2016–2023 Milan Design Week with Nilufar Gallery – Milan, Italy
- 2000 *House & Garden Magazine* Showhouse – Mahwah, NJ, USA
- 1999 French Designer Showhouse benefiting The American Hospital of Paris – New York, USA



Simple, surprise inside



Edition 1/3 | Casted brass with dark black patina, massif golden teak iroko with tinted MDF panels, stainless steel hinges | 80 × 180 × 55 cm

Furniture | Console [↗](#)
£ 10,000 - 12,000

ANTOINE GUEKJIAN

× ASSAAD RAPHAEL | CONSULTING
GHAZAR MAMIGONIAN | SAND CASTING
MICHEL HADDAD | WOODWORK
GROOVERHIDE | LEATHER TOOLS POUCH

Stemming from a childhood-rooted passion for cars, and particularly classic cars, product designer, Antoine Guekjian, presents **Top-Down**, a uniquely designed steering wheel as an homage to his four-wheeled dreams. Where art crosses roads with the world of automobiles.

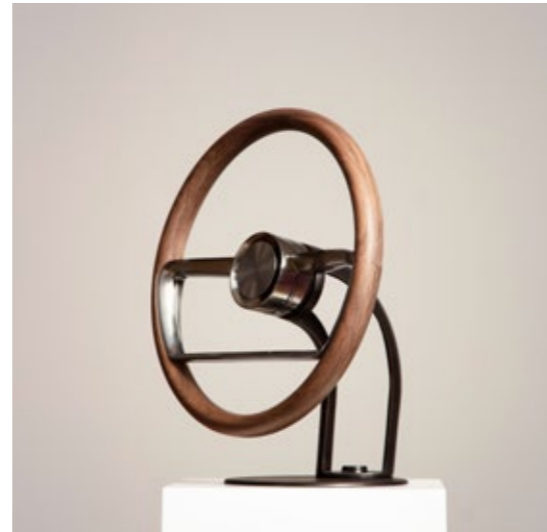
From a young age, the apple of Antoine's eyes has been classic cars. Whether for their defining silhouettes or the roaring sounds of the engines, Antoine has always dreamt of designing his very own steering wheel. One that represents the intangible feeling of freedom that you get nowhere else but behind the wheel - with the top down.

Made of American walnut wood and sand casted chromed brass, this one-of-a-kind creation can either be utilised as a functional steering wheel or as a desk topper for car lovers, dreamers and aficionados alike.

Antoine Guekjian is a product designer specialising in the final stage of design: the production phase. He also works in the family business, manufacturing industrial kitchen equipment and machinery.

AWARDS

- 2021 Emerging Talent Award by *Architectural Digest*



Top-Down



Edition 1/1 | American Walnut, casted chrome brass
10 × Ø 38 cm, 8 kg

Lifestyle [↗](#)
£1,000 - 1,500

SOURAYA HADDAD

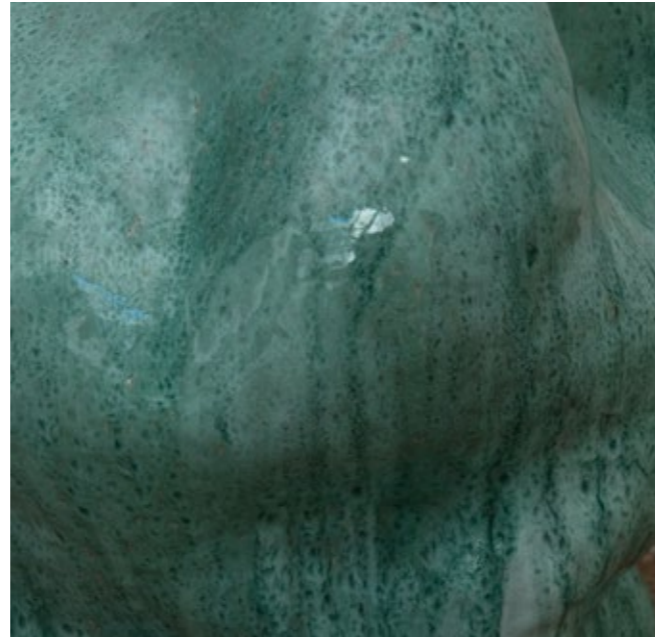
Two distinct pieces were crafted together to encapsulate the essence of Souraya Haddad's **L'Hymne à la Vie**.

The first, characterised by minimalism, takes form under her moulding hands, as a metaphorical representation of birth. The second piece depicts a vibrant, pulsating heart, symbolising life itself, where the valves were tastefully sculpted to rhythmically expand and contract. The inherent connection between these two handicrafts is inseparable, both engaged in a profound dialogue. Together, they give shape to the spirit of life, which is also reflected in the vibrant copper green colour of the pieces.

Souraya Haddad graduated from the Académie Libanaise des Beaux-Arts (ALBA) with a degree in Architecture, in 1987. She received her Master's degree in Landscape Architecture in from the Université de Montréal in 1992. After working in landscape architecture in Montreal, she enrolled in the Bonsecours School to pursue studies in ceramics. What started out as a hobby, evolved into a full-time profession—and passion.

EXHIBITIONS AND RESIDENCY

- 2023 "Déambulation" at the Grand Palais Ephémère - Paris, France
- 2023 Piece currently exhibited with CRAFT Limoges at the Château de Sédières - Clergoux, France
- 2022 "Ceramic Banquet" solo exhibition for House of Today at Art Basel - Paris, France
- 2022 Residency at Craft Limoges, France with work exhibited at Adrien Dubouché National Museum - Limoges, France
- 2021 "Chimera, Remembrance of a Blooming Mind" solo exhibition at Saleh Barakat Gallery - Beirut, Lebanon



Hymne à la Vie

LIVE



Edition 1/1 | Stoneware, 1225 °C, electrical kiln

Smooth element: 48 × 36 × 36 cm, 16 kg; Tubular element: 49 × 45 × 44 cm, 30 kg | Sold as a pair

Ceramics [↗](#)

£ 12,000 - 14,000

INAASH ASSOCIATION

HDIYEH KHORBETI, 56 YEARS OLD, A PALESTINIAN REFUGEE FROM AIN AL HILWEH CAMP

When Palestinian refugees first arrived in Lebanon, the women brought with them a crucial transferable skill; traditional embroidery. This precious know-how had been passed down from mother to daughter for generations and it was to have a positive impact on the women and their families in camps.

When the INAASH Association, a Lebanese NGO, was founded by Huguette Bechara El Khoury Caland to assist the newly arrived refugees, it soon became clear that their extraordinary embroidery skills could both help the women generate an income and simultaneously preserve their Palestinian embroidery heritage. For over 50 years INAASH has continued to assist hundreds of women with this means to earn a sustainable income and improve their lives.

Today thanks to the skills of its talented embroiderers INAASH produces what are clearly acknowledged as collector's items. Such as this distinctive panel entitled *Beit Sahur*, a tribute to the rich embroidery heritage that developed in and around the city Bethlehem—one that combines profound history, religious significance, and communal talent.

Based on a typical thobe chest piece, the intricately embroidered **Beit Sahur** panel illustrates stitches and motifs that identify its provenance and are specific to the area. These include the central repeated pattern of steps in an inverted arch, the flower motif, and the geometric lozenge design.

This panel was embroidered by Hdiyeh Khorbeti, a 56 year-old Palestinian refugee woman residing in Ain Al Helwe Camp, South of Lebanon.

EXHIBITIONS

- 2023 Exhibited in Beit Al Saar, Bahrain and "Reel Palestine" in Dubai, UAE
- 2022 and 2021 "Ataya" exhibition in Abu Dhabi, UAE
- 2016 Exhibited in Kiasma Museum of Contemporary Art, Helsinki
- 2015 "Arts of the Islamic World" gala at the Museum of Fine Arts, Houston, USA, and in major Mona Hatoum Retrospectives at Le Centre Pompidou – Paris, France and at the Tate Modern – London, UK
- 2013 Exhibited at Kunstmuseum – St. Gallen, Switzerland and the Alexander and Bronin Gallery – New York, USA



Beit Sahur



Edition 1/1 | Canvas, tella, kham, DMC threads
145 × 82 cm, 1.03 kg

Textile [↗](#)
£ 2,000 - 4,000

KAREL KARGODORIAN



SAKO TUFENKJIAN | WOOD
SOUHEIL SALAMOUN | LEATHER

Composition B deconstructs and reimagines the fundamental elements of a chair through straight lines and rectangles. Karel Kargodorian partnered with a team of craftsmen to put the various elements of the chair together.

Exceptionally talented woodworkers carved the wood planks and carefully arranged them to enhance the directional approach of this design, gracefully accentuating the flow of the chair's form. One armrest intentionally elevated and wider than the other provides a generously sized surface, perfect for accommodating a tablet or enjoying a coffee moment. Combined with the handicraft of leatherworkers who upholstered the faux-leather pad so that it smoothly integrates with the seat, complementing its shape but diverging in colour: a navy blue that contrasts with the beechwood's fine, silky texture.

For both the designer and artisans, **Composition B** represents a journey of experimentation and exploration between them, giving both a deeper understanding of each other's art and skillset.

Karel Kargodorian holds a Bachelor's degree in Product Design from l'Académie Libanaise des Beaux-Arts (ALBA). She designed her first product for Exil Collective, which was exhibited at Dubai Design Week in 2021. Additionally, she was the recipient of a merit partial scholarship from ALBA and House of Today, recognising her dedication and potential in the field of design.



Composition B



Edition 1/15 | Beech wood, synthetic leather
87 × 85 × 66 cm, 24 kg

Furniture | Seating [🔗](#)
£1,200 - 1,600

PETER KHATCHERIAN



SAKO TUFENKJIAN | WOOD
SOUHEIL SALAMOUN | LEATHER

Peter Khatcherian set himself on a mission: to design and craft an atypical smoking pipe, one that could also take on a bigger meaning, like the concept the life.

He imagined an oval-shaped tobacco pipe, which emphasizes the egg, symbol of new beginnings, of creation and of the eternal circle of life

To give shape to his invention, he began by carving the commonly used, Briarwood. Next, he carefully selected and painstakingly crafted, shaped, and polished one of the oldest and rich-veined wood blocks from Europe. The resulting **Egg of LIFE**, elevates the role of a pipe into a thought piece, turning it into a source of contemplation as one enjoys his moment of smoking

Peter Khatcherian has been handcrafting pipes for the last 16 years, a skill handed down from his father. He began his career working in Interior Design, and today he restores vintage furniture and antiques to keep this old modern art alive.

EXHIBITIONS

- Participated in exhibitions organized by several social communities in addition to NGOs.
- Cooperating with “Mashghal” to represent Lebanon’s living arts/artisans



Egg of LIFE



Edition 1/1 | Bowl: briar wood, stem: marble acrylic, band: acrylic, palm tree wood, silver
6.3 × 5 × 16 cm, 0.4 kg with stand

Lifestyle [🔗](#)
£ 600 - 800

KARINE LETAYF

This piece continues Karine Letayf's explorations on nature and its undeniable decline. More specifically it focuses on the pressing issue of deforestation and the scarcity of trees, which pose grave threats to biodiversity and the animal kingdom.

Through the artist's powerful symbolism, a tree trunk serves as a canvas on which three objects land. These objects include an acorn, rich in essential trace elements; an artichoke, known for its potent antioxidant properties; and a titmouse, playing a crucial role in pollination. In **Le Tronc, le Gland, l'Artichaut et la Mésange huppée**, each of these objects carries a profound purpose: to heal the tree's cells, and to transport sap from roots to leaves—thereby breathing new life into this nature that man is destroying.

In return, the tree trunk craves these elements, vital for its own existence and well-being.

Karine Boustany Letayf is a French -Lebanese artist born in Beirut. She completed her university studies in Paris at the Académie Charpentier in 1987 with a degree in graphic design and photography. After returning to Lebanon, she embarked on a career at a renowned advertising agency H&C Leo Burnett. However, in 1992, she decided to venture out on her own and founded her own graphic design firm, Black Trombone.

In 2004, Karine interrupted her career in graphic design, realising that her true passion lay in working with the earth. She enriched her journey with ceramics training, which eventually led her to fully dedicate herself to this newfound passion.

She is currently based in France and divides her work between her studios in Beirut and Paris.

EXHIBITIONS

- 2023 "MENART Fair" – Paris, France
- 2023 Salon Révélation with Pik'd Gallery at Grand Palais Éphémère – Paris, France
- 2023 "Green cedars and road for life" exhibition – Beirut, Lebanon
- 2019 "Beyond" exhibition by LIFE at Phillips - London, UK
- 2019 "1000 vases" exhibition - Dubai, UAE



Le Tronc, le Gland, l'Artichaut et la Mésange huppée



Edition 1/1 | White stoneware | Le Tronc: 43 × Ø 37 cm, 20 kg; Sculptures: Le Gland: 12 × 24 cm; L'Artichaut: 23 × Ø 10 cm; La Mésange: 27 × Ø 17 cm | Sold as one lot of 4 elements

Ceramics [🔗](#)
£ 4,000 - 5,500

GALAL MAHMOUD

× **IDP - PIERRE BOUTROS | WOOD**
JEAN-MARC BOULOS | MARBLE

An imposing monolith, that behaves like a delicate, light mural console: **MCO 14** was inspired by a project conceived for Beirut's Musée des Civilisations and presented at the Venice Biennale in 2014. This audacious handmade sculpture was formed by 900 cubes of recycled wood, ingeniously united under a marble crown.

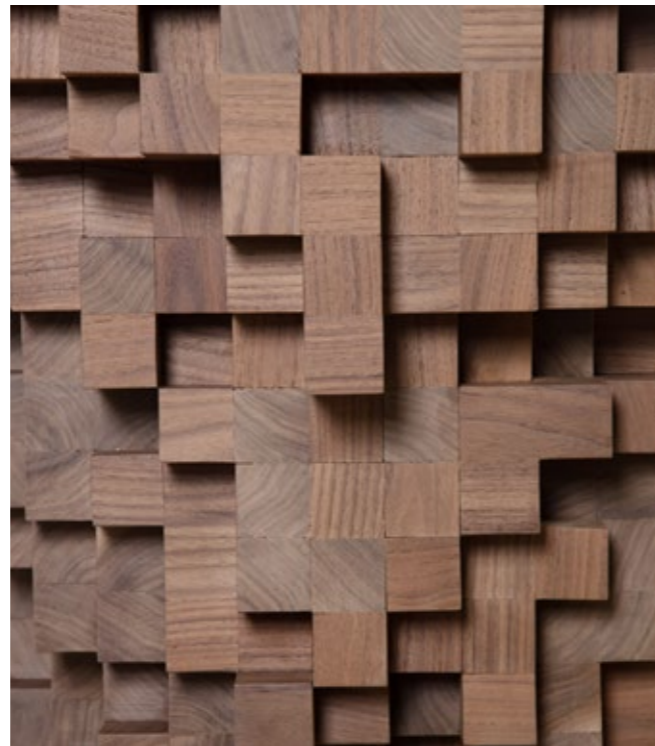
While the complex contour of these successive strata seems random and unpredictable, they echo the history of our nation, evolving in permanent deconstruction and reconstruction. And they stand as the proud reflection of our multicultural identity, chaotic yet also rich and varied

Galal Mahmoud designed it to be an assemblage of the workmanship of several artisans: woodcarvers using their handcraft on recycled solid wood, and marble cutters applying their masterly skills to cut and shape the noble stone. Together this work embodies history, tradition, and modernity— much like the country that inspires it.

Galal Mahmoud graduated in 1986 from the École d'Architecture in Versailles. In 1987, he went on to take his first steps in the world of professional architecture, in the capital that blends character with style and Classical Art with Contemporary influence, Paris. Broadening his horizons, he teamed up with highly skilled Lebanese architects to establish GM Architects Beirut in 1997 and GM Architects Abu Dhabi in 2006.

EXHIBITIONS AND AWARDS

- 2022 European Property Award – The Myconian Naia Hotel – Mykonos, Greece
- 2018 International Property Award – Myconian Collection Hotels – Mykonos, Greece
- 2017 Arab Architecture Award – Best Resort Design – O'Beach Resort, Jordan
- 2015 International Architecture Award – Museum of Civilizations – Munich, Germany
- 2015 Future Project Award – MIPIM Architectural Review – Museum of Civilizations – Nice, France
- 2014 Exhibit at "La Biennale" – "Museum of Civilisations" – Venice Biennale of Architecture – Venice, Italy



MCO 14



Edition 1/5 | Recycled solid walnut, palissandro black with moon shine surfacing
Base: 90 × 85 × 35 cm; Top: 114 × 42 cm, 23 kg

Furniture | Console [↗](#)
£ 8,500 - 10,000

MAISON TARAZI

Sparkling even on the outside, Camille & Carole Tarazi's jewellery box design is the perfect setting for the sparkling gems inside—and hidden within its mysterious secret compartments.

It's a testament to Maison Tarazi's mastery of various crafts, combining their know-how in carpentry, jewellery, and upholstery to come up with nothing less than a brilliant art piece.

The exterior is covered by marine mother-of-pearl squares, expertly inlaid by their artisan jeweller, fashioned like the multi-facets of a diamond. Their talented wood maker has carved the squares to feel like they are sprinkled on the wood, alternating between grey and blue painted squares. Likewise, their upholsterer has created soft, cushioned beds to lay the gems on. And while the box opens with a framed mirror cover, the only way to release the drawers is through a special magnetic button.

Architect and Partner Manager of Maison Tarazi, Camille belongs to the 5th generation of a family business renowned for the production of objets d'art, furniture, and oriental decor. Established in 1862, Maison Tarazi is the proud maker of fine oriental crafts, a family-run company keeping local craft traditions alive.

EXHIBITIONS

- 2023 "Dessine-moi un Cèdre" – Dar el Nimer – Beirut, Lebanon
- 2022 "Monaco Méditerranée", Fontvieille – Monaco, France
- 2021 "Aux Portes de l'Orient" with Virginie Broquet – Maison de France – Monaco, France
- 2019 "Beyond" exhibition by LIFE at Phillips – London, UK
- 2017 "Beirut Design Fair" – Beirut, Lebanon



Sparkle



Edition 1/1 | Beech wood, mother of pearl, painting
9 × 50 × 30 cm, 6.1 kg

Decorative object [↗](#)
£ 2,800 - 3,800

MARIAGROUP

× BOULOS AND GEORGES BIZRI | METAL FOUNDERS

Born from a desire to bring a piece of the forest into interior spaces, **Horizon A** is a collection of 5 solid cast aluminium planters for in and outdoor use.

Through the sand-casting process, the mold's cavity acts as a first receptacle to the molten metal defining its volume and texture. In return, once the metal cools, the vessel becomes the receptacle for the soil.

Just like in the forest, the planters share the same horizontal level: an abstract connection to reflect a lattice of unseen support, the soil as a common layer where roots reach out for each other.

MARIAGROUP is a design studio led by brother and sister duo Georges and Michèle Maria. Michèle graduated from the American University of Beirut (AUB) with a Bachelor's degree in Architecture in 1999, while Georges completed his Master's degree in Architecture from the Académie Libanaise des Beaux-Arts (ALBA) in 2003, when both joined their interior designer mother and father to establish MARIAGROUP.

EXHIBITIONS

- 2022 *Cornette floor lamp* for Gabriel & Guillaume – The Salon, Art + Design – New York, USA
- 2019 *Gravitation suspended light* for Gabriel & Guillaume – The Landmark Penthouse atop Steinway Hall – New York, USA
- 2014 *Showdown table* for House of Today – Beirut, Lebanon



Horizon A

LIVE



Edition 1/1 | Cast Aluminium | 75 × Ø 45 cm, 29 kg; 50 × Ø 80 cm, 76 kg;
55 × Ø 65 cm, 58 kg; 43 × Ø 49 cm, 35 kg; 77 × Ø 65 cm, 59 kg | Sold as one lot of 5 elements

Decorative object [↗](#)
£ 20,000 - 25,000

ELIE METNI

× ELIE KHOURY | METAL WORK

The idea behind this piece is to challenge the relationship between machine-made and hand-made, and the dichotomy between artisanal work and mass production. The approach was to blur the boundaries between these two techniques by producing the same piece five times by hand, making them alike yet unique.

Homophones consists of a group of 5 identical modules, with the ability to be seamlessly combined or separated, serving versatile purposes as one sees fit.

Elie Metni graduated with a Master's degree in architecture from the Académie Libanaise des Beaux-Arts (ALBA) and worked at Herzog & de Meuron in Basel, Switzerland. In 2016, he founded the award-winning Elie Metni Architects and is currently teaching a design studio at the School of Architecture and a master's design studio at the School of Interior Design, both at ALBA.

EXHIBITIONS AND AWARDS

- 2018 House of Today Biennale in collaboration with Wallpaper Store – Beirut, Lebanon
- 2018 Minjara / Design Ethos – Beirut, Lebanon
- 2017 IF design Award
- 2017 Milan Design week – Milan, Italy
- 2016 International Fashion Showcase Award – London, UK
- 2016 Venice Architecture Biennale in collaboration with 109 Architects – Venice, Italy



Homophones



Edition 1/5 to 5/5 | Treated stainless steel
Each 90 × 25 × 25cm, 8.5 kg | Sold as one lot of 5 elements

Furniture | Console [↗](#)
£8,000 - 10,000

CYBELLE MOUTRAN

The eternal bond between parents and their children is at the heart of Cybelle Moutran's **Never Apart** clay sculpture.

To her, both parents and children are initially made of the same layers, layers that help them evolve, mature, and bloom. Layers like this sculpted clay, forever connecting the two bodies and ensuring they are never apart. Even if they are not always together.

Cybelle Moutran has always had a fascination with clay. Clay is soft, and under the cajoling, sculpting, carving powers of her expert hands, it takes on any shape she wants. Yet clay has a character, a soul, forever challenging the sculptor, teaching patience and humbleness.

Cybelle Moutran graduated with an MBA, and after a few years in the tourism industry, she took a ceramics class which opened the world of handcrafting for her. She started out at Nathalie Khayat Studio, where she continues to practice her art, moulding sculptural, abstract pieces, to this day.

EXHIBITIONS

- 2021 "On A Sidewalk" Solo exhibition at Beit Beirut – Beirut, Lebanon



Never Apart



Edition 1/1 | Stoneware, glaze, gold leaf | Element 1: 30.5 × 24 × 9 cm, 8.1 kg;
Element 2: 30.5 × 35.5 × 9.5cm, 10.8 kg | Sold as one lot of 2 elements

Ceramics [↗](#)
£1,500 - 2,500

ANASTASIA NYSTEN

× SAKO OHANIAN | METAL FOUNDER
YASMINA NYSTEN | SCULPTOR

In **Forbidden Fruit**, Anastasia Nysten sought to explore the significance of light, a central theme in both Nordic and Mediterranean cultures, each treating it in their unique way. The resulting **Forbidden Fruit** is a visual exploration of light and detail, inviting viewers to immerse themselves in a world where nature's interplay of light and shadow invites reflection on the complexities of life.

Working with a masterly metal craftsman, the artist chose to incorporate candles as symbolic representations of light, their flickering flames casting a subtle glow on the brass, illuminating the wilting branches that hold a variety of symbolic elements. Elements like luscious fruit, delicate leaves, and assiduous ants were carved, shaped and polished by the deft hands of the brass artisan.

Anastasia Nysten's background weaves together a rich tapestry of multicultural influences. Born in Ottawa, Canada to a Lebanese mother and Finnish father, she embraced diverse experiences while growing up in Finland, France, and Lebanon. Fuelling her passion for design, she pursued a Master's degree in Industrial Design from the Académie Libanaise des Beaux-Arts (ALBA) in Beirut, where she honed her skills at Karen Chekerdjian Design Studio. She later joined Michael Anastassiades' team in London, after which she spent 3 years in Dubai, working for her family company, immersing herself in the realms of design, art, and culture.

EXHIBITIONS AND AWARDS

- 2023 "Eruption" exhibition at Anima Gallery – Doha, Qatar
- 2023 "Beirut, The Eras of Design" collective exhibition at mudac – Lausanne, Switzerland
- 2022 "Beirut, The Eras of Design" exhibition at Centre for Innovation and Design (CID) in Grand-Hornu – Brussels, Belgium
- 2019 Won the Pharaon 150 years public bench project competition in Beirut
- 2018 Maison & Objet Talent Award – Paris, France



Forbidden Fruit



Edition 1/7 | Brass
200 × Ø 65 cm, 8 kg

Lighting [↗](#)
£ 8,000 - 10,000

ADRIAN PEPE

Through his work Adrian Pepe interweaves nature and culture to create objects as tools to enable an open discourse on materiality, our morphing cultural landscape, and present condition.

As a fibre artist, his works are textile-based focusing on dexterity and technique. Craft, he sees as a pattern, the temporary coagulation and binding of materials by hand or machine into structures. The importance of craft for Pepe, lies in the bodily engagement with matter as it is sourced and transformed.

Through the process of directly colliding with the sentient provider of the raw material, be it plant or animal, collaborations are formed that help render a more holistic understanding of nature.

Adrian Pepe is a Honduran-born fibre artist presently residing in Beirut, Lebanon. He graduated with a Bachelor of Fine Arts and a Master of Arts from the Savannah College of Art and Design (SCAD) in the United States.

EXHIBITIONS AND AWARDS

- 2023 Grant recipient- UNESCO Cultural and Creative Industries - BERYT
- 2023 Sharjah Architecture Triennial – Sharjah, UAE
- 2023 Fibraxtant Fair – Mallorca, Spain
- 2023 “Fragments of Time Unending” at Nika Gallery – Dubai, UAE
- 2022 “In/Un Becoming” at Kazerne – Eindhoven, The Netherlands
- 2022 “Lost in the Right Direction” at Art Design Lebanon – Beirut, Lebanon
- 2023 TaDA Residency – St Gallen, Switzerland
- 2022–2023 Intermix Residency – Ministry of Culture – Riyadh, KSA



Mending



Edition 1/1 | Felted wool
148 × 200 cm, 12 kg

Textile [🔗](#)
£ 4,000 - 5,500

SHAHA RAPHAEL

× ZELPHA RAPHAEL | KNITTING
ACID | METAL WORK

This piece is dedicated to the artisan, the designer's mother.

Shaha Raphael grew up watching her mother crocheting and knitting together unusual materials to create amazing bags. For this project, mother and daughter, artisan and architect collaborated to develop a herringbone hand-knitted fabric to be used for the base of the chair. The knitted fabric is attached to a steel frame, chosen to contrast the fibrous seating with a solid, natural texture, coloured by rust.

Shaha Raphael's practice is driven by a fascination with materials and their transformation. It explores fabrication that operates across various scales, from the landscape geology to the product's sculptural properties.

Shaha Raphael graduated with a Master's degree from the Architectural Association School of Architecture (AA) in London in 2021 and is currently working as an Architect at Studio Anne Holtrop.

AWARDS

- 2023 Winner of the EU Mies Young Talent Architecture Award, with project is being exhibited for the 18th Architecture Biennale in Venice, Italy.



A knitted chair



Edition 1/6 | Rusted steel, waxed cotton
76 × 45 × 45 cm, 5 kg

Furniture | Seating [↗](#)
£1,500 - 1,800

NADA RIZK

Hand sculpted with patience and mastery, Nada Rizk's **Bloom** sculpture is ever-blossoming, yet feels frozen in time.

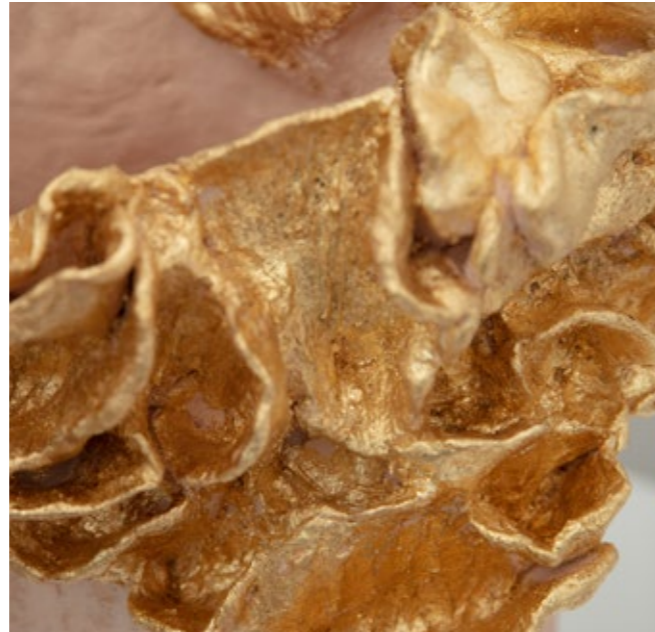
The artist's intricate sculpting skills embellish this ceramic piece, dressing it with a feeling of opulence, power, and sensuality. It can fill any room with an aura of romance and joy.

The contours, lines and shadows work together, as the piece allows us to re-examine and redefine our relationship with nature and the environment in which we live.

Based in Beirut, Nada Rizk is a Lebanese-Finnish multidisciplinary artist and designer working mainly in ceramics, stone and gold leaf. She is a graduate of the Académie Libanaise des Beaux Arts (ALBA) and holds a Master's degree in Political Science and International Relations from the London School of Economics (LSE).

EXHIBITIONS

- 2021 Paris Design week – Paris, France
- 2019 Beirut Art Fair – Beirut, Lebanon
- 2019 Beirut Design Fair – Beirut, Lebanon
- 2018 House of Today Biennale in collaboration with Wallpaper Store – Beirut, Lebanon
- 2018 33rd Salon d'Automne at Surssock Museum – Beirut, Lebanon



Bloom



Edition 1/1 | Hand built, sculpted ceramics with gold leaf
48 × 48 × 35 cm, 11 kg

Ceramics [🔗](#)
£ 3,500 - 5,000

T SAKHI BY TESSA AND TARA SAKHI

**GILBERT DEBS FOR OUNOVIS | LEBANESE SAND
AND RECYCLED CRUSHED RESIN WASTE
CHARARIB FATHALLA & FILS | SILK TRIMMING THREADS**

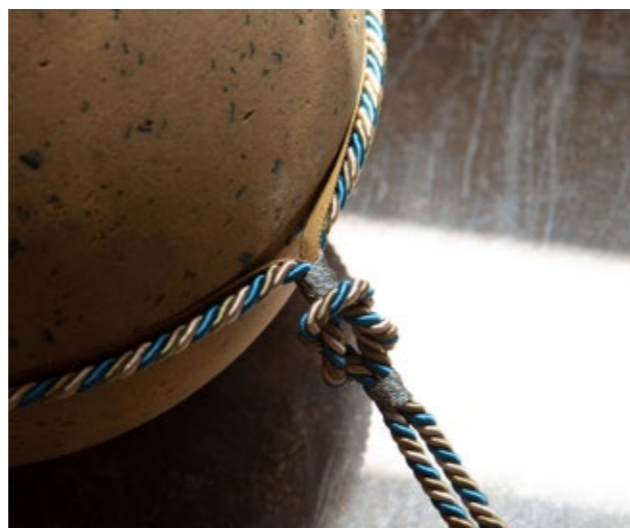
Tessa & Tara Sakhi's design piece **Sand Pearls**, draws inspiration from traditional iconic objects of a rosary, a masbaha and a pearl necklace. Scaled into a large sculpture, it embodies versatility and flexibility due to its multi-functional character capable of serving as both **indoor seating and table**.

The design was entirely and meticulously handcrafted by local artisans in Lebanon. An innovative texture of Lebanese sand grinded with the remnants of crushed resin waste is recycled and moulded into playful spheres. Traditional trimming curtain cords in silk are braided together and intertwine the symbolic 7 "pearls". This work merges art, craftsmanship, functionality and sustainability, and emphasizes the union between heritage and modernity.

Based in Venice and Beirut, T SAKHI is a multidisciplinary architecture and design studio co-founded in 2016 by Lebanese-Polish sisters Tessa and Tara El Sakhi. In an era characterized by relentless velocity, the sisters place social and sensorial interaction at the core of their practice, and question our contemporary perceptions of identity and living whilst embracing cultural heritage. Their synergetic projects traverse a kaleidoscope of artistic disciplines from small-scale architecture, urban public installations, commercial and residential interior design, collectible objects and scenography. A driving force within their creative process lies in their commitment to sustainability by recuperating discarded materials and recycling them to achieve ingenious textures and forms.

EXHIBITIONS

- 2022 "Jurat" exhibition with Le Lab Gallery in Park Avenue Armory for Salon NY – New York, USA
- 2022 "I Hear You Tremble" solo exhibition with Le LAB Gallery in San Gallo Church Venice for The Italian and Venice Glass Weeks with Special Recognition Prize from Fondazione di Venezia – Venice, Italy
- 2022-2023 "Reconciled Fragments" with Galerie Gosserez at PAD London – London, UK and PAD Paris as well as Christie's – Paris France
- 2021 Best Product Design in Createurs Design Awards
- 2021 "Letters from Beirut" public installation with Irthi Contemporary Crafts Council and The European Cultural Centre, in Giardini della Marinaressa during the Venice Architecture Biennale – Venice, Italy
- 2020 Nominated for ArchDaily's Building of the Year small-scale installation
- 2019 "WAL(L)TZ" Lebanon Pavilion for Abwab's 5th Edition in Dubai Design Week – Dubai, UAE



Sand Pearls



Edition 1/1 | Lebanese sand, recycled crushed resin waste, silk threads
Each Ø 50 cm, 40 kg | Sold as one lot of 7 elements

Furniture | Seating [↗](#)
£ 8,000 - 12,000

PAOLA SAKR

× NOHAD AL DAHER | RESIN AND ELECTRICITY

Odd Inside is an expression of the perplexing blend of contradictory emotions that we get each time we visit Beirut as expats - which intertwine into one large odd feeling. Hatred, affection, guilt, longing, anger, joy, frustration, solace, unease, optimism, and despair all coexist within us. It's a profound sense of belonging, yet simultaneously being pushed into an uncomfortable corner, stumbling on the edge of a precipice.

The work by Paola Sakr embodies that very sensation - an expression of overwhelming emotions that occupy a lot of space within us, seeping out like a sense of betrayal as we try to maintain composure. With its smooth light, warm hues, and striking curves, this table lamp crafted in collaboration with a resin artisan, demands to be placed exclusively along the sharp edge of a surface.

Paola Sakr graduated with honours from l'Académie Libanaise des Beaux-Arts (ALBA) in Beirut in 2016. Her studio is an award-winning, multi-disciplinary design studio that focuses on material experimentation to express poetry through functional objects. Their products often stem from a feeling, a story, or a spark of inspiration from the natural world.

EXHIBITIONS AND ACHIEVEMENTS

- 2022 Studio Paola Sakr pop-up take-over at The Slow Beirut - Beirut, Lebanon
- 2021 "On Foraging" exhibition at the UAE Pavilion, Expo Dubai - Dubai, UAE
- 2021 Commissioned art piece by Warehouse421 - Abu Dhabi, UAE
- 2020 "The Knit" exhibition at Studio Paola Sakr × Kvadrat - Copenhagen, Denmark
- 2018 Maison & Objet Rising Talents Award



Odd Inside



Edition 1/10 | Resin
30 × 22 × 22 cm, 5 kg

Lighting [↗](#)
£1,500 - 2,000

ZEINA BACARDI SAKR

Zeina Bacardi Sakr's intricately crafted **Billows** captures the enchanting fluidity and beauty of ivory porcelain.

Her exquisite artistry has given shape to unique forms inspired by the intrinsically transforming nature of clouds and waves. This delicate porcelain **Billows** piece is hand sculpted with a special technique to translate the fluidity and movement of the wet ivory porcelain clay into its fired and final form.

Zeina Bacardi Sakr is a clay shaper at heart, who lets her hands tell stories through ceramics. She holds a BA in Fine Arts and Art History from the American University of Beirut (AUB). In 2016, this self-taught ceramicist launched B. by Zeina Bacardi, a line of handmade fine ceramics, ranging from unique tableware, sculptural vessels, and lighting.

EXHIBITIONS AND ACHIEVEMENTS

- Sakr's works have been exhibited in Beirut, Dubai, Abu Dhabi, London recently, along with a feature in 2022 in *Architectural Digest Middle East*



Billows



Edition 1/1 | Porcelain, glaze
17 × 33 × 32 cm, 3 kg

Ceramics [🔗](#)
£1,500 - 2,500

JOYCE SAMAHA

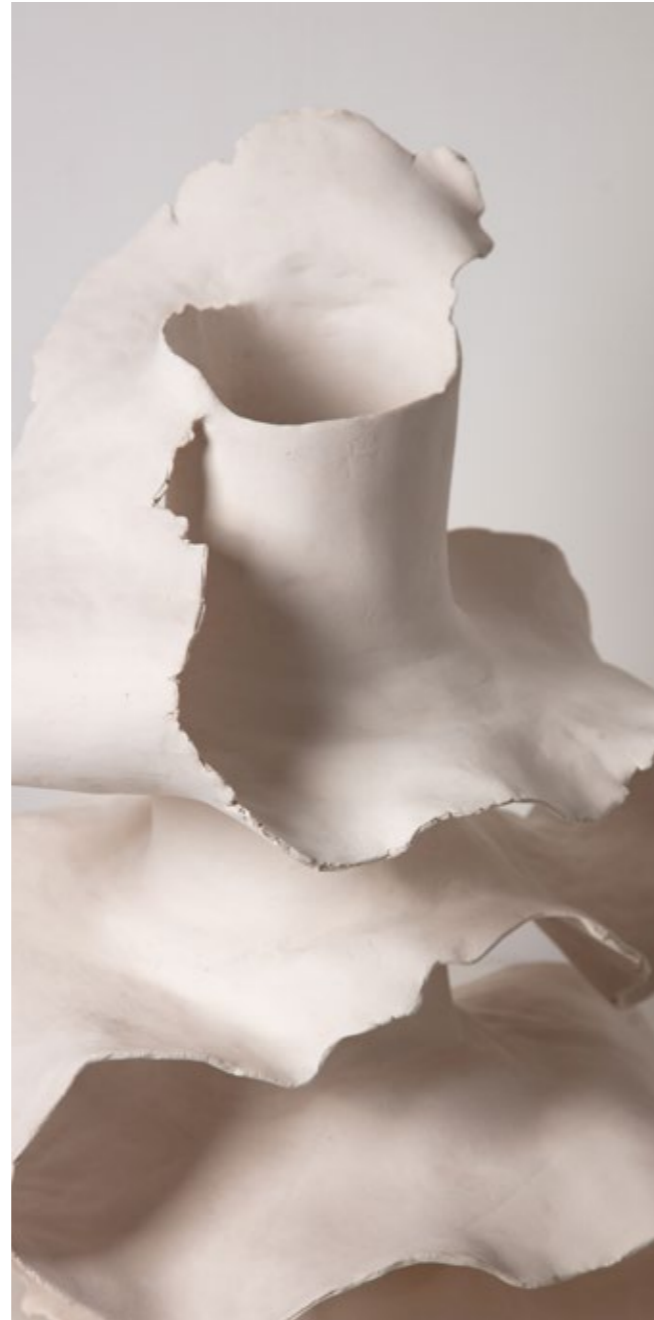
In this eloquent sculpture, Joyce Samaha's artful mastery of ceramics becomes an invitation to embrace **The Flow** of life and be immersed in the flow of time.

With her exquisite sculpting artistry, she gives shape to the sensual, sophisticated simplicity of an uninterrupted fluid movement. Its bold, smooth forward motion is an ode to life's continuous flow, and ever-evolving journey.

Joyce Samaha is a Lebanese ceramic artist, with a Communication Arts degree from the Lebanese American University (LAU). She discovered the art of ceramics 14 years ago, as a medium of exploration and self-expression. She participated in many ceramic workshops, from hand building techniques to wheel throwing, glazing, and firing, with renowned local and international ceramists.

EXHIBITIONS

- 2023 "Je suis une Femme" collection at Salon Révélation – Paris, France
- 2021–2022 Lebanon Pavilion at Expo Dubai – Dubai, UAE
- 2021 "Untold stories" collection at Artist of Beirut – Beirut, Lebanon
- 2020 "Rewired" collection – Entre Fiction et Réalité exhibition – Beirut, Lebanon
- 2019 *Résilience* collection – "Dessine-moi un Cèdre" exhibition at Résidence des Pins – Beirut, Lebanon
- 2018 *Unveiling* collection at Beirut Design Week – Beirut, Lebanon



The Flow



Edition 1/1 | White stoneware clay
53 × 50 × 32 cm, 6.9 kg

Ceramics [🔗](#)
£ 3,000 - 4,000

LEILA SBAITI

Symbol of eternal life and spiritual power, Medusa's hair is usually tangled. Yet in Leila Sbaiti's intricately handcrafted piece, it stands untangled.

The ceramicist's skilful fingers have set free the coils and curls of this iconic hair— freeing the power of Medusa, and that of all women.

Leila Sbaiti started mixing wheel throwing, with hand-building, slabs, and coils in her recent sculptures. She's often trying to push the clay to its limit by enlarging the size of her pieces, always trying to defy gravity. Her designs begin with an idea in mind, until the clay moulded by her hands takes her onto a new trajectory.

In 1982, Leila Sbaiti graduated with a BA Economics from the American University of Beirut (AUB), followed by a Master of Business Administration from the Lebanese American University (LAU) in 1985. In 1989, she received a BA in painting from the Lebanese University (LU). She has dedicated herself to her art of pottery since 2006.

EXHIBITIONS

- 2023 "Green Roads Against Forest Fires" at Arthaus – Beirut, Lebanon
- 2020 "Entre Fiction Et Réalité exhibition" at The Hangout – Beirut, Lebanon
- 2019 "Seven Spices" exhibition at 392 Rmeil Gallery – Beirut, Lebanon
- 2017 Beirut Design Fair at Biel – Beirut, Lebanon



Freeing Medusa



Edition 1/1 | Porcelain mix, bisque fired then glazed and fired again to 1200 °C | Element 1:
32 × 62 × 30 cm, 9 kg; Element 2: 35 × 45 × 20 cm, 5.5 kg | Sold as one lot of 2 elements

Ceramics [🔗](#)
£ 3,000 - 4,000

LINA SHAMMA

In the skilled hands of Lina Shamma, a beautifully crafted wheel-thrown base suggests a well of goodness brimming with wishful blessings, material and spiritual.

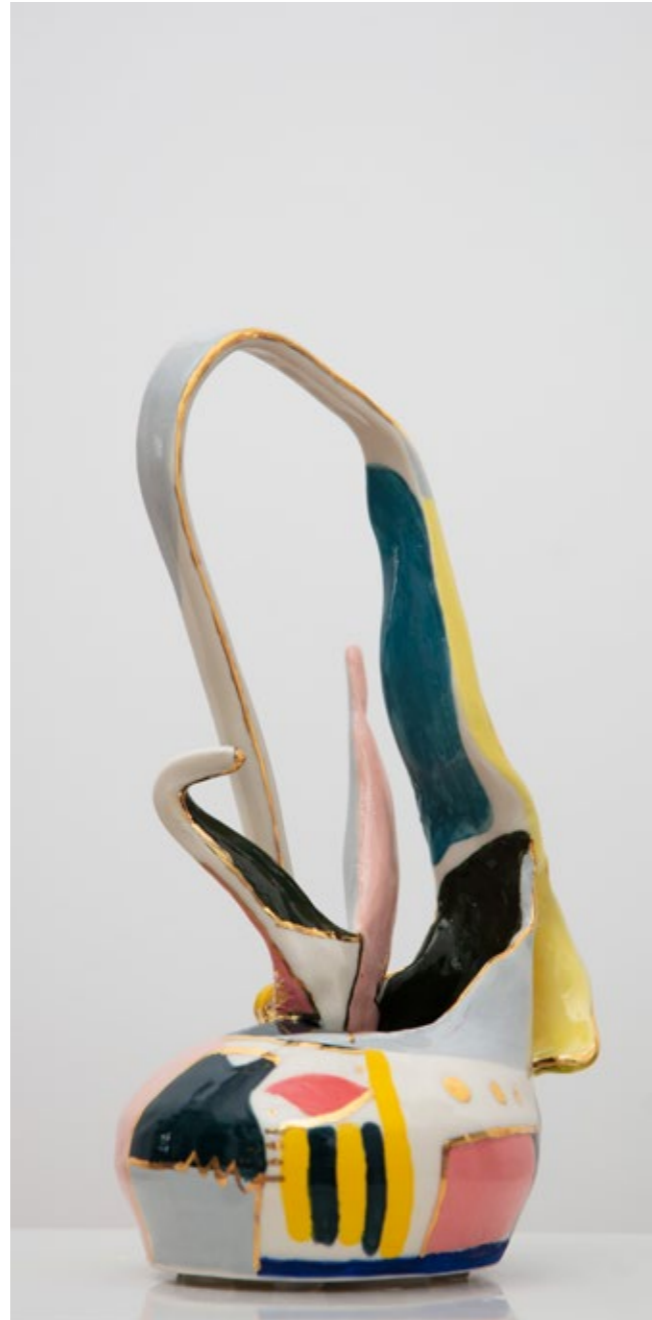
The fragile frame mirrors the humanity that lies at the core of LIFE's mission as viewed by the artist.

Shamma was inspired by the sensual, ethereal allure of fabric. Her hand-crafted pieces are designed and created in her Beirut-based atelier where she combines classical wheel throwing with reinterpretive and creative sculpting.

Lina Shamma holds a Bachelor in Architecture from the American University of Beirut (AUB) and an MBA from Columbia University in New York.

EXHIBITIONS

- 2023 *Whisperer*, a large vessel at Green Cedar Lebanon – Beirut, Lebanon
- 2022 “Imprévu” solo exhibition at the Westbeth Gallery, supported by House of Today (HOT) for Bungalow – New York, USA
- 2021 “Reflections/Refractions” at Dubai Design Week – Dubai, UAE
- 2017 “Saudade Komerabi” showing at Nilufar Gallery Depot during Salon del Mobili – Milan, Italy
- 2017 *An Ode to Cézanne, a still life of lemon* collection for The Beirut Art Fair - Beirut, Lebanon



The Well of Blessings



Edition 1/1 | Porcelain
34 × Ø 15 cm, 1.7 kg

Ceramics [↗](#)
£1,500 - 2,500

SPOCKDESIGN BY KARIM CHAYA & KAMAL AOUN

× ALI JAWAD | FRAME BUILDING

ACID | FINISHING AND CUSTOM PARTS

SALAH RABAH | ASSEMBLY AND COMPONENTS

JOHNNY FARAH | LEATHER AND ACCESSORIES

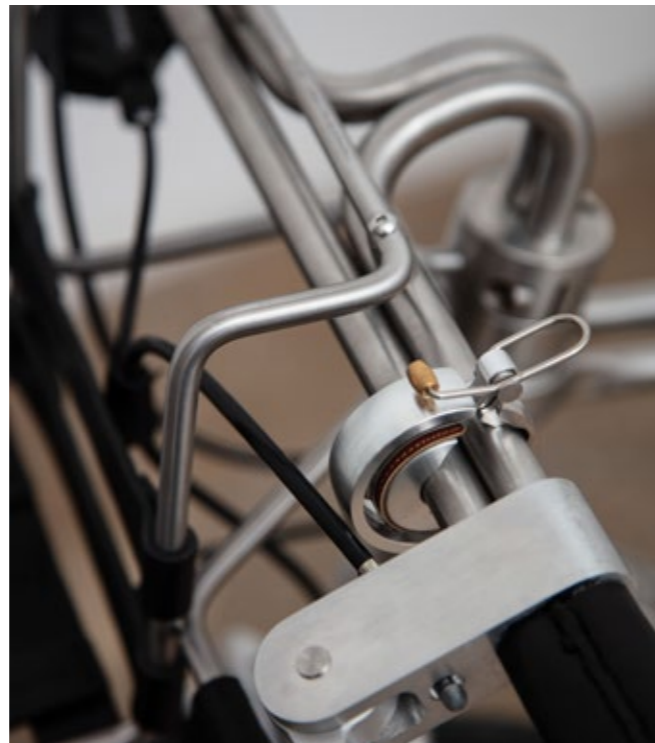
Karim Chaya and Kamal Aoun have designed a bicycle in a bid to improve the quality of life in Beirut, but also as a testimony to freedom, a call for the open road, and a return to simpler things.

The bicycle model is hand-built from scratch, by dedicated craftsmen who stubbornly and lovingly put it together in the studio, where they crafted locally sourced stainless steel, aluminium, bike components and leather. Much like a cycling journey, the process of designing and fabricating this object takes both designers and craftsmen back and forth, testing and tweaking, until together, they find a way to take one more step forward. It's a process encompassing experimentation, tinkering, and finally coming up with a sensible object!

Karim Chaya and Kamal Aoun, created SPOCKDESIGN, which evolved into a dedicated design studio with a wealth of connections and partners in engineering, sourcing, and fabrication. Creating an array of projects and objects, which include special commissions and exhibitions near and far, they value solution, execution and detailing above all, along with humour, whimsy and the unexpected.

EXHIBITIONS

- 2023 "Beirut, The Eras of Design" collective exhibition at mudac - Lausanne, Switzerland
- 2022 PAD London - London, UK
- 2022 "Icons of Porsche" exhibition - Dubai, UAE
- 2020 "Reboot Beirut" exhibition - Beirut, Lebanon
- 2019 The Salon NY at Park Avenue Armory - New York, USA



2wheels1tube



Edition 1/1 | Stainless steel, steel, rubber, leather, plastic, aluminium

100 × 65 × 180 cm, 16 kg

*Full specs available on request

Lifestyle [↗](#)

£ 12,000 - 14,000

TATIANA STEPHAN

The Hidden Message is an intricate tapestry, a hideaway for confessions, secrets, and tales that might never be told.

Tatiana Stephan weaves her inner thoughts and feelings into the heart of every fabric she creates, her masterful fingers and hands spinning their magic with every stitch.

Armed with patience and perseverance, calmness, and curiosity, she interweaves stitch and yarn, to create a tableau that hides her dreams in plain sight.

With a Master's degree in Architecture, Tatiana and her sister founded Architecture et Mécanismes, an ongoing exploration of systems and scales. Her yarn adventures first began in 2020. Soon, this self-taught weaver changed course, and started to create responsibly and sustainably whether by collecting textile waste, or by using dumped fishing nets.

EXHIBITIONS

- 2023 "(Un)common Threads", (DesignEast's debut show) at Alserkal Avenue - Dubai, UAE
- 2023 "NOMAD", the 12th edition, (part of the second DesignEast edition w/ patronage of Alserkal Initiatives) - Certosa di San Giacomo in Capri, Italy



The Hidden Message



Edition 1/1 | Textile waste on dumped fishnet
100 × 300 cm, 10 kg

Textile [↗](#)
£ 2,500 - 4,000

STRO DESIGNS

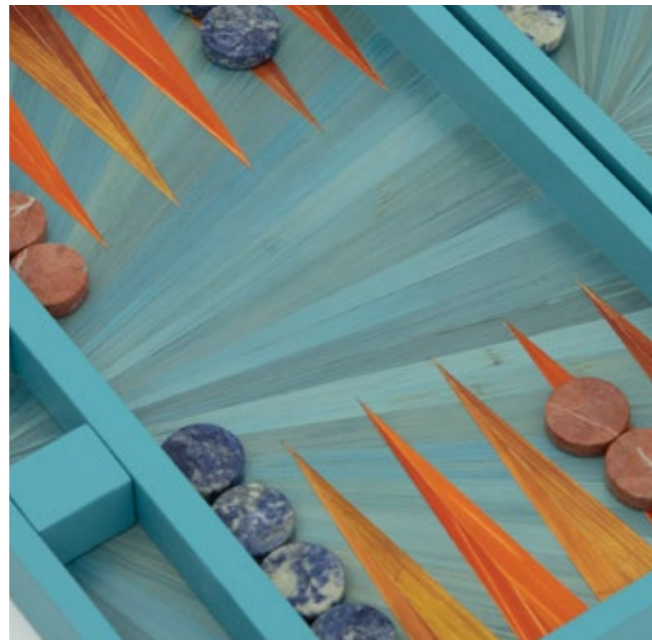
Backgammon, one of the oldest board games, has been reinterpreted, and modernised to become an art deco piece through the skilled artisnary of Stro Designs.

Made of dyed rye and wheat straws, this portable backgammon board is as striking as it is singular. The art of straw marquetry is similar to that of wood marquetry the technique uses straws instead of veneer to craft unique backgammon pieces.

A board that makes a great companion on sunny summer afternoons

EXHIBITIONS

- 2023 "Ataya" exhibition – Abu Dhabi, UAE
- 2022 Dubai Design Week – Dubai, UAE
- 2022 ABCC the Arab British Chamber of Commerce – London, UK



Sunny Day - Backgammon



Edition 1/1 | MDF wood covered with straw marquetry
37.5 × 25 × 7 cm, 2.5 kg

Lifestyle [🔗](#)
£ 400 - 650

STUDIO CARAMEL BY RAMI BOUSHDID & ELIE BASSIL

× SHOPFIT

While browsing the streets of Beirut, Rami Boushdid and Elie Bassil stumbled upon a small woodworking shop where a master craftsman was creating beautiful pieces of furniture using traditional techniques that had been passed down to him from his father, and his grandfather before him.

His love for his craft inspired them to design **Regalia**, a bar cart that would embody the spirit of Lebanon. They worked with a team of artisans, each pushing their skills forward, to help achieve their design. The woodworker painstakingly carved the bar cart out of walnut wood, as the metal worker sculpted the wheel in the shape of a cedar branch. Finally, they enlisted the help of an upholsterer for the leather finishing touches and the mirror inside the glass closet. The outcome is an exquisite bar cart that embodies the traditions of Lebanese craftsmanship married with modern design.

Rami Boushdid and Elie Bassil are the duo behind Studio Caramel, a furniture design studio founded in Beirut in 2016. Rami has a BA in Interior Architecture from the Académie Libanaise des Beaux-Arts (ALBA) and a Master's degree in Interior Design from Scuola Politecnica di Design, while Elie holds an Executive Master's degree in Management from McGill University. The studio is known for its witty, detailed, and bold furniture inspired by the 20th century. In 2021, the studio moved to Paris and launched a new collection of mobile carts. These carts represent the opening of a new chapter for the studio, working on a new collection of furniture inspired by the French city.

EXHIBITIONS AND AWARDS

Studio Caramel's designs have been featured in collaborations with Soho House, De Gournay, and Kann Design. The studio's work has been praised by critics and collectors alike. In 2018, the studio was awarded the Rising Talent Award at Maison & Objet, a major international trade fair for furniture and design. In 2023, Studio Caramel was the chosen artist for Lamborghini's 60th anniversary.



Regalia



Edition 1/3 | Walnut, coated steel, glass, leather, brass, glass mirror finishings
90 × 55 × 90 cm, 70 kg

Furniture | Table [↗](#)
£ 6,500 - 8,000

STUDIO MANDA BY GEORGES MOHASSEB

× SAED AND MOHAMMAD DAYYOUB | RESIN

Formed by the passing of time and surrounded by natural landscapes, the Raouche Rock (la grotte des pigeons) stands as Lebanon's most iconic seafront landmark. Drawing inspiration from its timeless allure, Georges Mohasseb designed the **Raouche** dining table, in a deep blue resin cast. Envisioned to portray an aura of effortless fluidity, it was handcrafted by talented resin artisans who, with unyielding mastery, gave the table its organic shape, ethereal feel and awe-inspiring colored hues. The intended outcome offers a decidedly contemporary and timeless piece, granting the table a life of its own.

From his earliest creations, Mohasseb is renowned for creating limited edition, bespoke designs. His works mesh degrees of unparalleled craftsmanship, embodying a complex expression of materials, using colours, shapes and textures. His work draws inspiration from the forces of nature, fused with an artistic appeal.

He holds a Master's degree in Architecture and Design from the Catholic University of America. Subsequently, he pursued a specialized higher degree in carpentry at Ecole Boulle in Paris. Following his mastery of craftsmanship, he opened his first practice in Paris in 2008. He then moved to Beirut in 2011, where he founded and continues to head Studio Manda.

EXHIBITIONS

- 2023 "Beirut, The Eras of Design" collective exhibition at mudac – Lausanne, Switzerland
- 2021 "Intermission" solo exhibition at Le LAB – Giza, Egypt
- 2019 Nomad Venice with Carwan Gallery – Venice, Italy
- 2019 Salon Art + Design with Gabriel & Guillaume Gallery – New York, USA
- 2019 PAD Paris with Galerie Gosserez – Paris, France



Raouche

LIVE



Edition 1/12 | Resin cast
75 × 110 × 220 cm, 300 kg

Furniture | Table [↗](#)
£ 24,000 - 28,000

KARINA SUKAR

MINJARA | WOOD

Après la pluie le beau temps is an ode to the beginnings of Karina Sukar's journey into product design, where her first star piece was entitled *Idyllic Chair*, marking the opening of her namesake concept store.

Thanks to a trusted team of devoted artisans who developed **Après la pluie le beau temps**, feminine forms have been accentuated, and vivid colours which represent those found in nature and which depict life and all of its beauty and hope.

Karina Sukar's work is often inspired by her surroundings and environment, such as the breathtaking views of the giant Cedars where she spent summers during her childhood, with the mountains, pure air, and the sounds of nature fuelling her creative energy.

Karina Sukar studied Interior Architecture, where she was significantly impacted by the history of design. Her interest in product design, as much as the interior of spaces that nest humans and soulful furniture that warm a space, is the main reason she uses raw natural materials while placing great importance on sustainability.

EXHIBITIONS

- 2022 Dubai Design Week – Dubai, UAE
- 2019 Tokyo Design Week, under Design Pier – Tokyo, Japan
- 2019 Salone del Mobile – Milan, Italy
- 2017 Beirut Design Fair – Beirut, Lebanon
- 2005 "Switch on Lebanese Design" exhibition by William Sawaya for Salon du Meuble – Paris, France



Après la pluie le beau temps



Edition 1/15 | Lacquered wood, stainless steel
32 × 74.9 × 10.6 cm, 7 kg

Decorative object [↗](#)
£1,200 - 2,000

THOMAS TRAD

× MARMGROUP | MARBLE

These lamps are a product that embodies the heart and soul of Lebanon, blending creativity and craftsmanship in a unique and beautiful way. Designed by Thomas Trad, their cylindrical shape along with their angled face gives them a sleek and modern look that fits right into any home.

The lamps' standout feature, however, is the intricate pattern that is hand-carved into the flat surface. This pattern is a signature design element on Thomas Trad products and is brought to life by skilled artisans with their painstakingly perfect finishings.

By bringing together creativity and traditional techniques, **Gekkou** – which means moonlight in Japanese – represents a unification of old and new, serving as a testament to the beauty and resilience of Lebanon's culture. It's a product that not only illuminates a space but also tells a story of creativity, dedication, and collaboration.

Product and interior designer, Thomas Trad, founded his design studio, which specializes in creating modern objects, furniture, and spaces that seamlessly blend Japanese culture and art deco with contemporary design principles.

EXHIBITIONS AND ACHIEVEMENTS

- 2023 "Beirut, The Eras of Design" collective exhibition at mudac – Lausanne, Switzerland
- 2022 Nominated for Product Designer of the year – *Architectural Digest Middle East*.
- 2022 Nominated 9 Emerging Designer – *Architectural Digest*
- 2022 Nominated 50 *Architectural Digest Middle East*
- 2021 Nominated for Best Interior Designer (residential) for Identity Award



Gekkou (月光)



Edition 1/1 | Nickel plated brass, bulb, hand carved green Jade, hand carved red onyx
Element 1 : 18 × 45 cm, 12.5 kg; Element 2 : 12 × 30 cm, 7 kg | Sold as a pair

Lighting [🔗](#)
£ 4,500 - 6,500

RICHARD YASMINE

ZIAD ABBAS | BRASS AND GOLD WORK
MILED SEMAAN AT MISCO FURNITURE | WOOD

Jasmin Éphémère blossoms in the realm of design, where creativity merges with nature's beauty. The juxtaposition of jasmine, a blossom that blooms only briefly, and gold, a material associated with eternity, creates a visual dialogue between transience and everlasting splendour. The brainchild of Richard Yasmine, this enchanting shrine-like cabinet embodies elegance and serenity.

Jasmin Éphémère captures the essence of purity and grace symbolized by jasmine. The artisans painstakingly carved every blossom and leaf to reflect the subtle beauty of the flower, adding a final poetic touch with a white enamel finish. The luminous golden hue reflects the ethereal glow of the sun, infusing the piece with an aura of divine radiance. Then, gracefully laid petals and leaves so they seem to sway smoothly, as if caught in a gentle breeze.

Richard Yasmine, a Lebanese interior architect and product designer, channels his vivid imagination to create objects inspired by Beirut, life, emotions, and the human body. He integrates Middle Eastern culture and Lebanese craftsmanship into his creations, seeking a harmonious blend of tradition and new technologies.

EXHIBITIONS AND AWARDS

- 2022-2023 "Beirut, The Eras of Design" collective exhibition at Centre for Innovation and Design (CID) - Brussels, Belgium and at mudac - Lausanne, Switzerland
- 2021 *Architectural Digest* 50 Middle East Best Architects and Designers in the Region - Middle East
- 2021 *Dwell Magazine* 24 Best of International Talents - USA
- 2019 "Ô-CULT" the water sanctuary, commissioned by the Italian Ministry of Foreign Affairs, curated by la Triennale di Milano Design Museum - Milan, Italy
- 2019 "WAKE UP CALL" selected to be part of the permanent exhibition at the mudac Museum - Lausanne, Switzerland
- 2016-2023 Milan Design Week - Milan, Italy



Jasmin Éphémère

LIVE



Edition 1/1 | 18-carat gold-plated brass, white enamel, 18-carat gilded carved wood
47 × 32 × 25 cm, 11 kg

Decorative object [↗](#)
£ 10,000 - 12,000

RANA YAZIGI

With every setting of the sun, every dusk is a celebration, a chant, a chorus. An invitation to slow down, to listen to the various melodies and harmonies filling the air at sunset.

Such is the world of **Dusk Chorus**, Rana Yazigi's impeccably crafted hand-built white stoneware. They were inspired by vintage glass liqueur decanters and are topped with sculpted birds engaged in conversation.

After completing her studies in cinematography and marketing and working for several years in the field of cultural and arts management, Rana Yazigi fell in love with clay in 2016. Since then, she has created objects that meet halfway between the functional and the decorative – perpetually looking for the comforting softness of objects and crockery to be touched and used. Based in Beirut, her delicately handcrafted pieces—whether classic or playful—are sculpted, slabbed or draped in small series and try to turn daily routines into meaningful rituals.

EXHIBITIONS AND ACHIEVEMENTS

- 2021 "Earthen Poetry", collective exhibition at Mojo Art Gallery – Beirut, Lebanon
- 2022 "Arts and Crafts" 1-month residency at Ergastule – Nancy, France - through the NAFAS programme launched by the French Institute in Beirut and the support of GALOP – Hermes Lebanon



Dusk Chorus



Edition 1/1 | Stoneware | Element 1: 33 × Ø 9.5 cm, | Element 2: 15.5 × 10 × 10 cm;
Element 3: 12.5 × 9.5 × 9.5 cm; 1.3kg each | Sold as one lot of 3 elements

Ceramics [🔗](#)
£1,500 - 2,500

CHRISTIAN ZAHR

× **MARMGROUP | MARBLE CARVING**
JEAN WAKIM | BRASS WORK

Christian Zahr's concept of three marble shelves draws from the region's tradition of stone carving and was influenced by the integration of architecture within the landscape throughout various civilisations. This artful triptych features objects and miniature architectural elements nestled within intricate landscapes.

After choosing the right marble leftover, Zahr partnered with marble stone cutters to shape the appropriate form for each shelf, creating a grotto-like sculptures.

The overall design invites viewers to embark on a journey that blurs the boundaries between art, craft, functionality, architecture and nature, creating a unique harmony that resonates with the essence of our primal connection to the natural world.

Christian Zahr is an architect and artist based in Beirut. A graduate of the Académie Libanaise des Beaux-Arts (ALBA) in 2003, he works at the intersection of architecture, landscape design, object design, and art.

EXHIBITIONS AND ACHIEVEMENTS

- 2022 "In Marble we trust" installation at Beirut Art Centre (BAC) - Beirut, Lebanon
- 2021 "Lost in the right direction" exhibition - Deir el Qalaa, Lebanon
- 2021 "1000 Vases" exhibition - Milan, Italy
- 2019 Beirut Design Fair - Beirut, Lebanon
- 2019 "La Vitrine" forma Urbis - Beirut, Lebanon
- 2019 "1000 Vases" exhibition in Dubai Design District - Dubai, UAE



Suspended Landscapes Triptych



Edition 1/5 | Travertine marble, copper | Silver travertine: 115 × 31 × 20 cm, 51 kg; Red travertine: Furniture | Shelving 90 × 37 × 27 cm, 39 kg; Stalactite travertine: 127 × 35 × 17 cm, 46 kg | Sold as one lot of 3 elements £13,000 - 15,000

NADA ZEINEH

× HUSSAM SHRAIM | METAL FOUNDER

Nada Zeineh's piece **Ruptures** is a clay sculpture cast in bronze.

Her process of cutting a body of clay in two parts and reconstructing it, is a journey symbolising the potential for healing and change. It captures the feeling of something being unexpectedly torn apart leaving behind an indelible mark.

The fractured cracks hence created are a reminder of the vulnerability of human nature, of the impermanence of life. They are a visual reminder of the human capacity for transformation and the potential for finding beauty within brokenness.

Born and raised in Beirut, Nada Zeineh has a BA in Architecture from the American University of Beirut (AUB). After 10 years spent in France where she specialised in Museography, she returned to Lebanon where she worked on two cultural projects : the Soap Museum in Saida and the American University of Beirut (AUB) museum in Beirut.

She also designs and creates handmade jewellery using various materials such as terracotta gilded with gold leaf or brass wires and sheets woven, twisted, hammered, and dipped in gold.

Her work is inspired by the heritage of the region , ancient civilisations, nature, architecture and ethnic jewellery all part of our collective memory.

EXHIBITIONS AND AWARDS

- 2022 "Hommage à Huguette" solo at Saleh Barakat Gallery – Beirut, Lebanon
- 2020 Piasa auction house in Paris with a series of boxes inspired by the work of artist Huguette Caland
- 2012 "Pathways" exhibition – Beirut Art Center (BAC)- Beirut, Lebanon
- 1997–2006 AUB Archaeological Museum – Beirut, Lebanon
- 1997–2000 Soap Museum – Saida, Lebanon
- 2006 Invitation to Talents at the Messe – Frankfurt, Germany



Ruptures



Edition 1/6 | Cast bronze

Rupture 1: 35 × 11.5 × 14 cm, 11 kg; Rupture 2: 25 x.12 × 12 cm, 7.5 kg | Sold as one lot of 2 pairs

Decorative object [🔗](#)

£ 8,000 - 10,000

TERMS AND CONDITIONS OF SALE

All items in this catalogue are part of an auction opening on August 8th 2023 and closing on November 10th 2023 at 9.30pm UK time, during LIFE's Global Gala dinner at the Science Museum in London. Proceeds from the sale of these items will benefit LIFE Generation (UK registered charity No. 1136612) in order to support its mission of providing Education programmes.

All prices are in GBP sterling

1. All bids for the Silent Auction will be made using the Givergy platform
2. The live auction will take place during the Global Gala dinner on 10th November 2023
3. Full payment can be made:
 - For silent lots: by credit card via the Givergy platform
 - For live lots: by credit card at the payment desk on the night of the Gala or by bank transfer to:
LIFE Generation Ltd
Sort code: 40-04-01
Account number: 22667916
IBAN: GB54HBUK40040122667916
SWIFT: HBUKGB4B
4. All bidders must be 18 years of age or above
5. Statements by LIFE and LIFE Generation in the brochure or made orally or in writing elsewhere, regarding the authorship, origin, date, age, size, medium, attribution, genuineness, provenance, condition or estimated selling price of any lot are merely statements of opinion and are not to be relied upon as statements of definitive fact. LIFE and LIFE Generation are not responsible for the correctness of any such statement nor for any other errors of description or for any faults or defects in any lots. Catalogue illustrations are for guidance only
6. No lot can be taken unless it has been paid in full. The buyer will not acquire title to the lot until all amounts due to LIFE Generation have been paid in full. From the time of collection, the lot will be entirely at the buyer's risk
7. All lots will be collected from Beirut, Lebanon. To arrange collection of the lots once payment has been made, please contact LIFE-TRH-2023@lifelebanon.com after the auction closes, after which a storage and insurance fee will apply

These Terms and Conditions of Sale are subject to English law which shall apply to their construction as well as to their effect and the jurisdiction of the English Courts all stated herewith

FOR THE LIVE AUCTION

8. The buyer shall be the person with the highest bid accepted by the auctioneer
9. The auctioneer has the right to refuse any bid and to advance the bidding at his absolute discretion and in the case of error or dispute to put up a lot for bidding again
10. Subject to the auctioneer's discretion, the striking of the hammer marks the acceptance of the highest bid and the conclusion of the sale
11. If prospective buyers give LIFE Generation instructions to bid on their behalf, by using the absentee bid form obtained by sending an email to gala@lifelebanon.com, LIFE Generation will use reasonable efforts to do so, provided these instructions are received no later than 24 hours before the sale. Bids should be placed in GBP sterling. If LIFE Generation receives absentee bids on a particular lot for identical amounts, and at the auction these bids are the highest bids for the lot, it will be sold to the person whose bid was received first
12. Following the sale, the buyer must provide LIFE Generation with their name, permanent address and contact telephone number
13. All Live lots are to be paid for in full on the night of the sale at the Givergy Payment Desk
14. Should the bidder not settle on the night, payment must be made within 1 week of the auction by bank transfer as above

SPONSORS

WE ARE GRATEFUL TO OUR SPONSORS FOR THEIR GENEROUS SUPPORT

smogallery
art & design

ãrope
INSURANCE

